

**Bacteroides sp., Strain 1\_1\_6**

**Catalog No. HM-23**

**Product Description:** *Bacteroides* sp., strain 1\_1\_6 was isolated from the sigmoid colon of a healthy 56-year old male undergoing a colon cancer screen procedure in Calgary, Alberta, Canada.

**Lot<sup>1</sup>: 58831239**

**Manufacturing Date: 08NOV2009**

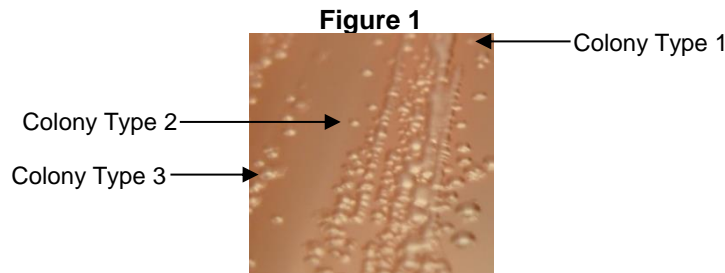
TEST	SPECIFICATIONS	RESULTS
<b>Phenotypic Analysis</b> Cellular morphology Colony morphologies <sup>2,3</sup>  Vitek <sup>®</sup> 2 anaerobe and <i>Corynebacterium</i> (ANC) identification card	Gram-negative rod Report results  Consistent with <i>Bacteroides</i> sp.	Gram-negative rod Colony type 1: Circular, entire, low convex and gray Colony type 2: Circular, low convex and white Colony type 3: Irregular, spreading film and gray (Figure 1)  Consistent with <i>Bacteroides</i> sp.
<b>Genotypic Analysis</b> Sequencing of 16S ribosomal RNA gene (~ 1380 bp)	Consistent with <i>Bacteroides</i> sp.	Consistent with <i>Bacteroides</i> sp.
<b>PCR Assay of Extracted DNA</b> 16S ribosomal RNA gene	~ 1500 bp amplicon	~ 1500 bp amplicon
<b>Viability (post-freeze)<sup>2</sup></b>	Growth	Growth

<sup>1</sup>*Bacteroides* sp., strain 1\_1\_6 was deposited by Professor Emma Allen-Vercoe, Department of Molecular and Cellular Biology, University of Guelph, Guelph, Ontario, Canada. HM-23 was produced by inoculation of the deposited material into Modified Chopped Meat Medium (ATCC medium 1490) and incubated for 72 hours at 37°C and anaerobic atmosphere (80% N<sub>2</sub>:10% CO<sub>2</sub>:10% H<sub>2</sub>).

<sup>2</sup>48 hours at 37°C and anaerobic atmosphere (80% N<sub>2</sub>:10% CO<sub>2</sub>:10% H<sub>2</sub>) on Tryptic Soy Agar with 5% defibrinated sheep blood

<sup>3</sup>Three colony types were observed, individually isolated and characterized. Each colony type reverted back to a blend of all three types. The 16S ribosomal RNA gene of each colony type was sequenced and found to be identical and consistent with *Bacteroides* sp.

<sup>4</sup>24 hours at 37°C and anaerobic atmosphere (80% N<sub>2</sub>:10% CO<sub>2</sub>:10% H<sub>2</sub>) on Tryptic Soy Agar with 5% defibrinated sheep blood



**Date:** 04AUG2010

**Signature:** Signature on File

**Title:** Technical Manager, BEI Authentication or designee

ATCC<sup>®</sup>, on behalf of BEI Resources, hereby represents and warrants that the material provided under this certificate has been subjected by ATCC<sup>®</sup> to the tests and procedures specified and that the results described, along with any other data provided in this certificate, are true and accurate to the best of ATCC<sup>®</sup>'s knowledge.

ATCC<sup>®</sup> is a trademark of the American Type Culture Collection. You are authorized to use this product for research use only. It is not intended for human use.

