

Bacteroides sp., Strain 2_1_22

Catalog No. HM-18

Product Description: *Bacteroides* sp., strain 2_1_22 was isolated from biopsy tissue taken from the ascending colon of a healthy 54-year old female undergoing a colon cancer screen procedure in Calgary, Alberta, Canada in 2007.

Lot^{1,2}: 59994659

Manufacturing Date: 12AUG2011

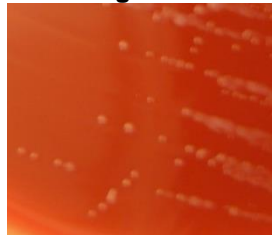
TEST	SPECIFICATIONS	RESULTS
Phenotypic Analysis Cellular morphology Colony morphology ³	Report results Report results	Gram-negative rod Circular, low convex, entire, translucent and smooth (Figure 1)
Genotypic Analysis Sequencing of 16S ribosomal RNA gene (~ 1420 base pairs)	≥ 99% identical to GenBank: ACPQ01000117 (<i>Bacteroides</i> sp., strain 2_1_22)	≥ 99% identical to GenBank: ACPQ01000117 (<i>Bacteroides</i> sp., strain 2_1_22)
Viability (post-freeze)³	Growth	Growth

¹Quality control of HMP material is only performed to demonstrate that the material distributed by BEI Resources is identical to the deposited material. It should not be considered a complete characterization of the deposited organism.

²*Bacteroides* sp., strain 2_1_22 was deposited by Professor Emma Allen-Vercoe, Department of Molecular and Cellular Biology, University of Guelph, Guelph, Ontario, Canada. The deposited material was inoculated into Modified Chopped Meat Medium (ATCC medium 1490) and incubated for 48 hours at 37°C and anaerobic atmosphere (80% N₂:10% CO₂:10% H₂). Broth was then added to Kolles and incubated for 48

³48 hours at 37°C and anaerobic atmosphere (80% N₂:10% CO₂:10% H₂) on Tryptic Soy Agar with 5% defibrinated sheep blood

Figure 1



Date: 17 APR 2012

Signature:

Title: Technical Manager, BEI Authentication or designee

ATCC®, on behalf of BEI Resources, hereby represents and warrants that the material provided under this certificate has been subjected to the tests and procedures specified and that the results described, along with any other data provided in this certificate, are true and accurate to the best of ATCC®'s knowledge.

ATCC® is a trademark of the American Type Culture Collection. You are authorized to use this product for research use only. It is not intended for human use.

