

***Klebsiella pneumoniae*, Strain BIDMC 13**

**Catalog No. NR-41931**

**Product Description:** *Klebsiella pneumoniae* (*K. pneumoniae*), strain BIDMC 13 was isolated in 2009 from human blood in Boston, Massachusetts, USA.

**Lot<sup>1</sup>: 62907126**

**Manufacturing Date: 11SEP2014**

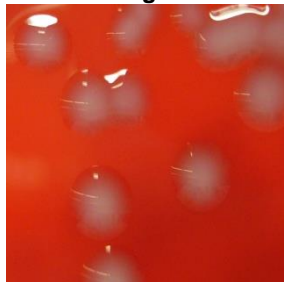
TEST	SPECIFICATIONS	RESULTS
<b>Phenotypic Analysis</b> Cellular morphology Colony morphology <sup>2</sup>  Motility (wet mount) VITEK <sup>®</sup> MS (MALDI-TOF)	Gram-negative bacilli Report results  Report results Consistent with <i>K. pneumoniae</i>	Gram-negative bacilli Circular, low convex, entire, smooth, mucoid and gray (Figure 1) Non-motile Consistent with <i>K. pneumoniae</i>
<b>Genotypic Analysis</b> Sequencing of 16S ribosomal RNA gene (~ 900 base pairs) Riboprinter <sup>®</sup> Microbial Characterization System	Consistent with <i>K. pneumoniae</i> Consistent with <i>K. pneumoniae</i>	Consistent with <i>K. pneumoniae</i> Consistent with <i>K. pneumoniae</i>
<b>Purity (post-freeze)<sup>3</sup></b>	Consistent with <i>K. pneumoniae</i>	Consistent with <i>K. pneumoniae</i>
<b>Viability (post-freeze)<sup>2</sup></b>	Growth	Growth

<sup>1</sup>*K. pneumoniae*, strain BIDMC 13 was deposited by Andrew B. Onderdonk, Director, Clinical Microbiology, Pathology, Brigham and Women's Hospital, Boston, Massachusetts, USA. NR-41931 was produced by inoculation of the deposited material into Tryptic Soy broth and incubated for 20 hours at 37°C in an aerobic atmosphere with 5% CO<sub>2</sub>. Broth inoculum was added to Tryptic Soy agar with 5% defibrinated blood kolles which were grown 24 hours at 37°C in an aerobic atmosphere to produce this lot.

<sup>2</sup>24 hours at 37°C in an aerobic atmosphere on Tryptic Soy agar with 5% defibrinated blood

<sup>3</sup>Purity of this lot was assessed for 7 days at 37°C in an aerobic atmosphere on Tryptic Soy agar with 5% defibrinated blood

**Figure 1**



**Date:** 09 DEC 2014

**Signature:**

**BEI Resources Authentication**

ATCC<sup>®</sup>, on behalf of BEI Resources, hereby represents and warrants that the material provided under this certificate has been subjected to the tests and procedures specified and that the results described, along with any other data provided in this certificate, are true and accurate to the best of ATCC<sup>®</sup>'s knowledge.

ATCC<sup>®</sup> is a trademark of the American Type Culture Collection.  
 You are authorized to use this product for research use only. It is not intended for human use.

