

Genomic DNA from *Trypanosoma cruzi*, Strain CL

Catalog No. NR-50237

Product Description: Genomic DNA was extracted from *Trypanosoma cruzi* (*T. cruzi*), strain CL. Strain CL was isolated in 1963 from naturally infected *Triatoma infestans* (kissing bug) collected from a house in Rio Grande do Sul, Encruzilhada, Brazil.

Lot¹: 64104304

Manufacturing Date: 18FEB2016

TEST	SPECIFICATIONS	RESULTS
Agarose Gel Electrophoresis	High molecular weight chromosomal DNA	High molecular weight chromosomal DNA (Figure 1)
Content by PicoGreen[®] Measurement	1 µg to 3 µg per vial	4.4 µg in 100 µL per vial (44 µg/mL) ²
Genotypic Analysis Sequencing of putative C-5 sterol desaturase gene (<i>SC5D</i>) (~ 710 bases)	≥ 99% sequence identity to <i>T. cruzi</i> Discrete Typing Unit (DTU) <i>T. cruzi</i> I (TcVI)	99.4% sequence identity to <i>T. cruzi</i> DTU TcVI
PCR Assay of Extracted DNA <i>SC5D</i> ³	~ 800 base pair amplicon	~ 800 base pair amplicon
OD₂₆₀/OD₂₈₀ Ratio	1.7 to 2.1	1.9
Protozoan Inactivation 10% of total yield plated on Liver Infusion Tryptose (LIT) medium ⁴	No viable organisms detected	No viable organisms detected

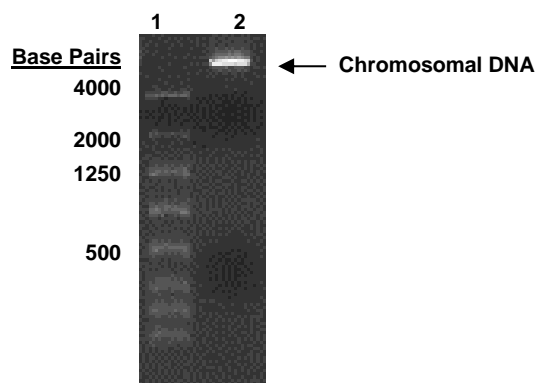
¹NR-50237 was extracted from an established culture of the deposited material that was also used to produce NR-49381 (Lot 64004706). Genomic DNA was extracted using proprietary technology. NR-50237 lot 64104303 is provided in 10 mM TrisHCl, 1 mM EDTA, pH 7.5.

²The amount of genomic DNA in the vial exceeds the current specifications, but does not negatively impact the final product.

³PCR was performed as described in Cosentino, R. O. and F. Agüero. "A Simple Strain Typing Assay for *Trypanosoma cruzi*: Discrimination of Major Evolutionary Lineages from a Single Amplification Product." *PLoS Negl. Trop. Dis.* 6 (2012): e1777. PubMed: 22860154.

⁴Incubated in LIT medium (ATCC[®] Medium 1029: adjusted to contain 10% heat-inactivated fetal bovine serum) for 14 days at 25°C in an aerobic atmosphere.

Figure 1: Agarose Gel Electrophoresis



Lane 1: Lonza FlashGel™ DNA Marker
Lane 2: 200 ng of NR-50237

Date: 07 MAR 2017

Signature:



BEI Resources Authentication

ATCC®, on behalf of BEI Resources, hereby represents and warrants that the material provided under this certificate has been subjected to the tests and procedures specified and that the results described, along with any other data provided in this certificate, are true and accurate to the best of ATCC®'s knowledge.

ATCC® is a trademark of the American Type Culture Collection.
You are authorized to use this product for research use only. It is not intended for human use.

