

***Pseudomonas aeruginosa*, Strain Pa1651**

**Catalog No. NR-51336**

**Product Description:** *Pseudomonas aeruginosa* (*P. aeruginosa*), strain Pa1651 was isolated from a blood sample taken from a patient with septicemia.

**Lot<sup>1</sup>: 70017414**

**Manufacturing Date: 16AUG2018**

TEST	SPECIFICATIONS	RESULTS
<b>Phenotypic Analysis</b> Cellular morphology Colony morphology <sup>2</sup>  Motility (wet mount) VITEK <sup>®</sup> MS (MALDI-TOF)	Gram-negative rods Report results  Report results <i>P. aeruginosa</i>	Gram-negative rods Circular, low convex, entire, translucent, rough and cream (Figure 1) Motile <i>P. aeruginosa</i> (99.9%)
<b>Genotypic Analysis</b> Sequencing of 16S ribosomal RNA gene (~ 1470 base pairs)	≥ 99% sequence identity to <i>P. aeruginosa</i> type strain (GenBank: CP000438.1)	99.9% sequence identity to <i>P. aeruginosa</i> type strain (GenBank: CP000438.1) <sup>3</sup>
<b>Purity (post-freeze)<sup>4</sup></b>	Growth consistent with expected colony morphology	Growth consistent with expected colony morphology
<b>Viability (post-freeze)<sup>2</sup></b>	Growth	Growth

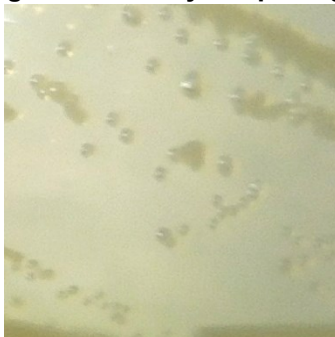
<sup>1</sup>NR-51336 was produced by inoculation of BEI Resources HMC-651 lot 59773819 into Tryptic Soy broth and grown for 1 day at 37°C in an aerobic atmosphere. Broth inoculum was added to Tryptic Soy agar kolles, which were grown for 1 day at 37°C in an aerobic atmosphere to produce this lot.

<sup>2</sup>1 day at 37°C in an aerobic atmosphere on Tryptic Soy agar

<sup>3</sup>Also consistent with other *Pseudomonas* species

<sup>4</sup>Purity of this lot was assessed for 7 days at 37°C in an aerobic atmosphere with 5% CO<sub>2</sub> on Tryptic Soy agar with 5% defibrinated sheep blood.

**Figure 1: Colony Morphology**



/Heather Couch/  
Heather Couch

Program Manager or designee, ATCC Federal Solutions

15 JAN 2019

ATCC<sup>®</sup>, on behalf of BEI Resources, hereby represents and warrants that the material provided under this certificate has been subjected to the tests and procedures specified and that the results described, along with any other data provided in this certificate, are true and accurate to the best of ATCC<sup>®</sup>'s knowledge.

ATCC<sup>®</sup> is a trademark of the American Type Culture Collection.

You are authorized to use this product for research use only. It is not intended for human use.

