

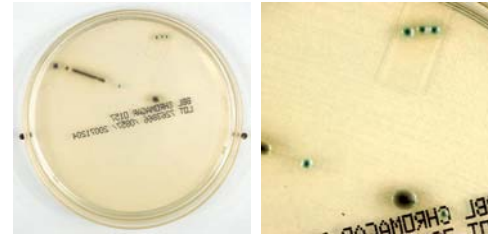
## Diarrheagenic *E. coli* organism panels

Outbreaks of foodborne disease caused by *E. coli* bacteria have become a serious problem in this country. *E. coli* organism panels, genomic DNA, and technical information are now available to support research to detect, treat, and prevent foodborne diseases.

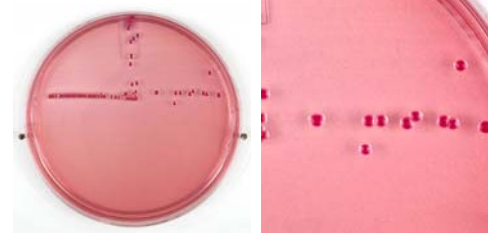
In February of 2008, it is anticipated that BEI Resources will have an organism panel that is composed of representatives of the diarrheagenic *E. coli* pathotypes ETEC, EHEC, EPEC, EIEC and EAEC available for ordering. Genomic DNA panels from these organisms will also be available in the near future.

Supporting documentation includes strain propagation information and growth and morphology on certain selective and differential microbiological media (see figure to the right).

For technical questions about these products or to learn more, please contact our Technical Services Department.



Growth and morphology on CHROMagar



Growth and morphology on sorbitol-MacConkey agar (SMAC)



Growth and morphology on Hektoen enteric agar (HEA) media