

Escherichia coli, Strain EH1534

Catalog No. NR-10148

Product Description: *Escherichia coli* (*E. coli*), strain EH1534, was isolated from a stool sample of a two year old female during the 2007 verocytotoxin-producing *E. coli* (VTEC) outbreak in Belgium. VTEC are important causes of gastrointestinal illness and hemolytic uremic syndrome in young children.

Lot¹: 58521735

Manufacturing Date: 18MAR2009

TEST	SPECIFICATIONS	RESULTS
Phenotypic Analysis Cellular morphology Colony morphology ² Analytical profile index (API [®] 20 E)	Gram-negative rod Report results Consistent with <i>E. coli</i>	Gram-negative rod Circular, low convex, entire, opaque and cream (Figure 1) Consistent with <i>E. coli</i>
Genotypic Analysis Sequencing of 16S ribosomal RNA gene (1410 bp)	Consistent with <i>E. coli</i>	Consistent with <i>E. coli</i> ³
PCR Assay of Extracted DNA 16S ribosomal RNA gene	~ 1500 bp amplicon	~ 1500 bp amplicon
Viability (post-freeze)⁴	Growth	Growth

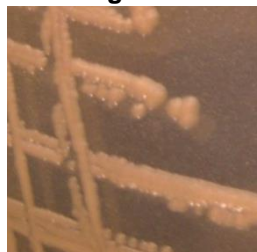
¹*E. coli* strain EH1534 was deposited to the ATCC[®] in 2008 by Dr. Denis Pierard, Belgian Reference Laboratory for *E. coli*, Department of Microbiology, University of Brussels. NR-10148 was produced by inoculation of the deposited material into Tryptic Soy Broth (BD 211825) and grown 24 hours at 37°C and aerobic atmosphere. Broth inoculum was added to Kolles which were grown 24 hours at 37°C and aerobic atmosphere to produce this lot.

²24 hours at 37°C and aerobic atmosphere on Tryptic Soy Agar (BD 236950)

³Also consistent with *Shigella* species

⁴24 hours at 37°C and aerobic atmosphere in Tryptic Soy Broth

Figure 1



Date: 03 JUN 2009

Signature: Signature on File

Title: Technical Manager, BEI Authentication or designee

ATCC[®], on behalf of BEI Resources, hereby represents and warrants that the material provided under this certificate has been subjected to the tests and procedures specified and that the results described, along with any other data provided in this certificate, are true and accurate to the best of ATCC[®]'s knowledge.

ATCC[®] is a trademark of the American Type Culture Collection.

You are authorized to use this product for research use only. It is not intended for human use.

