

Plasmid pMRLB.8 Containing Gene Rv1837c (Protein GlcB) from *Mycobacterium tuberculosis*

Catalog No. NR-13281

This reagent is the tangible property of the U.S. Government.

Product Description: NR-13281 is a recombinant expression vector containing *Mycobacterium tuberculosis* gene Rv1837c, which encodes a probable malate synthase G protein (GlcB). Gene Rv1837c was amplified by PCR and cloned into pET23b for expression in *Escherichia coli*.

Lot: 03.EC.05.07

Manufacturing Date: 07MAY2003

TEST	SPECIFICATIONS	RESULTS
Agarose Gel Electrophoresis (see attached QC Gel)¹ Linearization with <i>NdeI</i> Digestion with <i>NdeI</i> and <i>HindIII</i>	~ 5.88 kb ~ 2.22 kb (insert); ~ 3.66 kb (vector)	~ 5.88 kb ~ 2.22 kb; ~ 3.66 kb
Concentration by OD₂₆₀	Report results	0.1 µg/µL
Absorbance Ratio (OD₂₆₀/OD₂₈₀)	Report results	1.9

¹Performed by Colorado State University under the TB Vaccine Testing and Research Materials Contract (NIH)

Date: 31 AUGUST 2009

Signature: Signature on File

Title: Technical Manager, BEI Authentication or designee

ATCC®, on behalf of BEI Resources, hereby represents and warrants that the material provided under this certificate has been subjected by the contractor to the tests and procedures specified and that the results described, along with any other data provided in this certificate, are true and accurate to the best of ATCC®'s knowledge.

ATCC® is a trademark of the American Type Culture Collection.

You are authorized to use this product for research use only. It is not intended for human use.

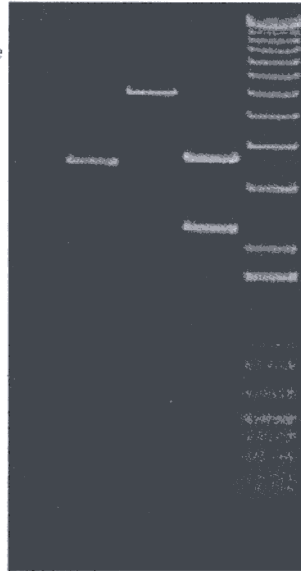
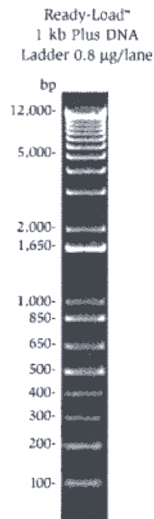


QC gel

Gel description file number, % agarose, buffer

kb28/0.8% agarose/1X TAE

Molecular weight markers Invitrogen 1KB Plus



Left->right
pMRLB.8 uncut
pMRLB.8/NdeI
pMRLB.8/NdeI+HindIII
1 KB+ marker

Generated by *Terry Swoboda*

Supervisor *[Signature]*

Form 4.2.03.JB