

Staphylococcus aureus, Strain HFH-30364

Catalog No. NR-10189

Product Description: *Staphylococcus aureus* (*S. aureus*), strain HFH-30364 is a community associated methicillin-resistant *S. aureus* (MRSA) strain isolated from a human abscess, and has been pulse-field gel electrophoresis (PFGE) typed as USA400 and is positive for the Panton-Valentine leucocidin virulence factor. *S. aureus*, strain HFH-30364 contains staphylococcal chromosome cassette *mec* type IV a.

Lot¹: 58325721

Manufacturing Date: 03OCT2008

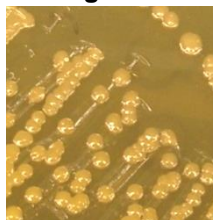
TEST	SPECIFICATIONS	RESULTS
Phenotypic Analysis Cellular morphology Colony morphology ² Oxacillin resistance Hemolysis on blood agar Biochemical Analyses Analytical profile index (API Staph [®]) Catalase	Gram-positive cocci Report results Resistant Report results Consistent with <i>S. aureus</i> Positive	Gram-positive cocci Circular, convex, entire, opaque and cream (Figure 1) Resistant Positive Consistent with <i>S. aureus</i> Positive
Genotypic Analysis Sequencing of 16S ribosomal RNA gene (~ 1420 bp)	Consistent with <i>S. aureus</i>	Consistent with <i>S. aureus</i>
PCR Assay of Extracted DNA 16S ribosomal RNA gene	~ 1500 bp amplicon	~ 1500 bp amplicon
Viability (post-freeze)³	Growth	Growth

¹*S. aureus*, strain HFH-30364 was deposited by Dr. Marcus Zervos, Division Head of Infectious Disease, Henry Ford Hospital, Department of Internal Medicine, Detroit, Michigan. NR-10189 was produced by inoculation of the deposited material into Brain Heart Infusion Broth (BD 237500) and grown 24 hours at 37°C. Broth inoculum was added to Kolles which were grown 24 hours at 37°C to produce this lot.

²24 hours at 37°C and aerobic atmosphere on Brain Heart Infusion Agar (BD 241830)

³24 hours at 37°C and aerobic atmosphere on Brain Heart Infusion Broth

Figure 1



Date: 09 OCT 2009

Signature: Signature on File

Title: Technical Manager, BEI Authentication or designee

ATCC[®], on behalf of BEI Resources, hereby represents and warrants that the material provided under this certificate has been subjected to the tests and procedures specified and that the results described, along with any other data provided in this certificate, are true and accurate to the best of ATCC[®]'s knowledge.



ATCC® is a trademark of the American Type Culture Collection.
You are authorized to use this product for research use only. It is not intended for human use.