

**Plasmid pMRLB.7 Containing Gene Rv3875 (Protein Esat6) from *Mycobacterium tuberculosis***

**Catalog No. NR-13280**

This reagent is the tangible property of the U.S. Government.

**Product Description:** NR-13280 is a recombinant expression vector containing *Mycobacterium tuberculosis* gene Rv3875, which encodes the early secretory antigenic target Esat6, also known as esxA. Gene Rv3875 was amplified by PCR and cloned into pET23b for expression in *Escherichia coli*. The gene was cloned without a signal sequence. The expressed protein is histidine-tagged and has an observed molecular weight of 10 kDa. The expected purified protein yield from a one liter culture is approximately 5 mg.

**Lot: 09.EC.8.26.p.MRLB7.BS.Rv3875**

**Manufacturing Date: 26AUG2009**

TEST	SPECIFICATIONS	RESULTS
<b>Agarose Gel Electrophoresis (see attached QC Gel)<sup>1</sup></b> Linearization with <i>NdeI</i> Linearization with <i>XhoI</i> Digestion with <i>NdeI</i> and <i>XhoI</i>	~ 3.95 kb ~ 3.95 kb ~ 0.29 kb (insert); ~ 3.67 kb (vector)	3.95 kb 3.95 kb <b>Pending</b> ; 3.67 kb
<b>Concentration by OD<sub>260</sub></b>	Report results	<b>Pending</b>
<b>Absorbance Ratio (OD<sub>260</sub>/OD<sub>280</sub>)</b>	Report results	<b>Pending</b>

<sup>1</sup>Performed by Colorado State University under the TB Vaccine Testing and Research Materials Contract (NIH)

**Date:** April 1st 2010

**Signature:** Heather Couch

**Title:** Technical Manager, BEI Authentication or designee

ATCC®, on behalf of BEI Resources, hereby represents and warrants that the material provided under this certificate has been subjected by the contractor to the tests and procedures specified and that the results described, along with any other data provided in this certificate, are true and accurate to the best of ATCC®'s knowledge.

ATCC® is a trademark of the American Type Culture Collection. You are authorized to use this product for research use only. It is not intended for human use.





QC gel

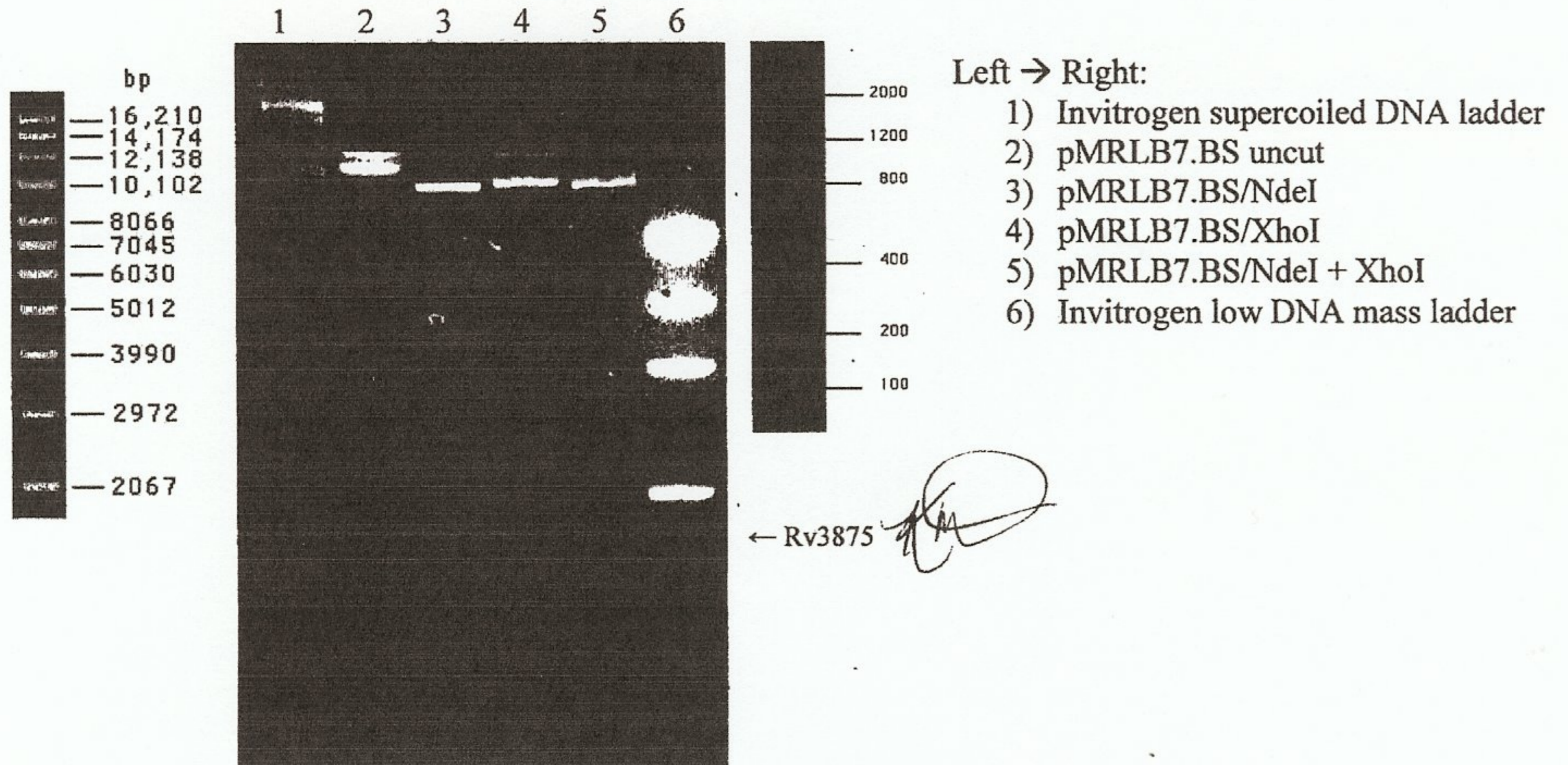
Restriction enzymes used in QC analysis:

NdeI & HindIII

Expected size of restriction fragments

Vector 3.665 kb pET23b + NdeI + XhoI  
Insert 0.288 kb Rv3875 + NdeI + XhoI  
Other 3.953 kb linearized plasmid – NdeI, XhoI single digests

Gel description (file number, % agarose, buffer) mmcontract2 pp 90, 2%, 1X TAE  
Molecular weight markers Invitrogen supercoiled DNA ladder, Invitrogen low DNA mass ladder



Generated by Madelee Moring Date 8/29/09

Supervisor Kanif Dab Date 8/31/2009