

***Mycobacterium tuberculosis*, Strain CDC1551, Transposon Mutant 392 (MT2385, Rv2323c)**

Catalog No. NR-14978

Product Description: *Mycobacterium tuberculosis* (*M. tuberculosis*), transposon mutant 392 was created by disruption of a conserved hypothetical protein (MT2385, Rv2323c), of the wild-type strain CDC1551. *M. tuberculosis*, strain CDC1551 is a clinical isolate that exhibited high levels of infectivity and virulence during a tuberculosis outbreak that occurred in rural Kentucky and Tennessee from 1994 to 1996.

Lot¹: 59151222

Manufacturing Date: 17MAR2010

TEST	SPECIFICATIONS	RESULTS
Phenotypic Analysis Colony morphology ² Middlebrook 7H10 Agar with OADC enrichment Lowenstein-Jensen (LJ) Agar Tryptic Soy Agar (TSA) Antibiotic Susceptibility ³ Kanamycin (20 µg/mL) Hygromycin (50 µg/mL)	Report results Report results Report results Resistant Susceptible	Irregular, peaked, rough and white (Figure 1) Growth No growth Resistant Susceptible
Point of Insertion^{3,4} Base number (TA site) relative to the start position of ORF	Report results	92

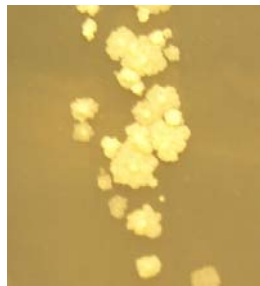
¹*M. tuberculosis*, transposon mutant 392 was prepared by inoculation of a LJ agar slant (VWR Catalog No. 29447-808) with 0.1 mL of the deposited material and incubated 30 days at 37°C.

²30 days at 37°C and aerobic atmosphere

³Performed on the seed material by Colorado State University under the TB Vaccine Testing and Research Materials Contract (NIH)

⁴The POI deviates by less than 10 bp from the POI reported by Johns Hopkins University.

Figure 1



Date: 07 MAY 2010

Signature: Signature on File

Title: Technical Manager, BEI Authentication or designee

ATCC®, on behalf of BEI Resources, hereby represents and warrants that the material provided under this certificate has been subjected to the tests and procedures specified and that the results described, along with any other data provided in this certificate, are true and accurate to the best of ATCC®'s knowledge.

ATCC® is a trademark of the American Type Culture Collection.

You are authorized to use this product for research use only. It is not intended for human use.



Biodefense and Emerging Infections Research Resources Repository
www.beiresources.org

E-mail: contact@beiresources.org

Tel: 800-359-7370

Fax: 703-365-2898