

Genomic DNA from *Listeria monocytogenes*, Strain FSL J2-003

Catalog No. NR-13351

Product Description: Genomic DNA was obtained from a preparation of *Listeria monocytogenes* (*L. monocytogenes*), strain FSL J2-003. *L. monocytogenes*, strain FSL J2-003 was isolated from an aborted bovine fetus in New York, 1993.

Lot¹: 58928047

Manufacturing Date: 19FEB2010

TEST	SPECIFICATIONS	RESULTS
Sequencing of 16S Ribosomal RNA Gene (1390 bp)	Consistent with <i>L. monocytogenes</i> Identical to BEI Resources NR-13234	Consistent with <i>L. monocytogenes</i> ² Identical to BEI Resources NR-13234
Agarose Gel Electrophoresis	High molecular weight chromosomal DNA	High molecular weight chromosomal DNA (Figure 1)
Concentration by PicoGreen[®] Measurement	4 to 6 µg in 25 to 100 µL per vial	5.4 µg in 32 µL per vial (168 µg/mL)
Functional Activity by PCR Amplification 16S ribosomal RNA gene	~ 1500 bp amplicon	~ 1500 bp amplicon
OD₂₆₀/OD₂₈₀ Ratio	1.7 to 1.9	1.8
Bacterial Inactivation 10% of total yield plated on Tryptic Soy Agar with 5% sheep blood ^{3,4}	No viable bacteria detected	No viable bacteria detected

¹*L. monocytogenes*, strain FSL J2-003 was deposited by Professor Patrick L. McDonough, Ph.D., Director, Bacteriology and Mycology Section, Animal Health Diagnostic Center, Department of Population Medicine and Diagnostic Sciences, College of Veterinary Medicine, Cornell University, Ithaca, New York. The bacterial preparation used for extraction of genomic DNA was produced by broth (Brain Heart Infusion, BD 237500) culture of the deposited material. After incubation for 24 hours at 37°C in an aerobic atmosphere, genomic DNA was extracted using proprietary technology.

²Also consistent with other *Listeria* species

³7 days at 37°C in an aerobic atmosphere

⁴An extraction procedure was used that has been shown to consistently inactivate 100% of Gram-negative or Gram-positive bacteria.

Date: 27 JUL 2010

Signature: Signature on File

Title: Technical Manager, BEI Authentication or designee

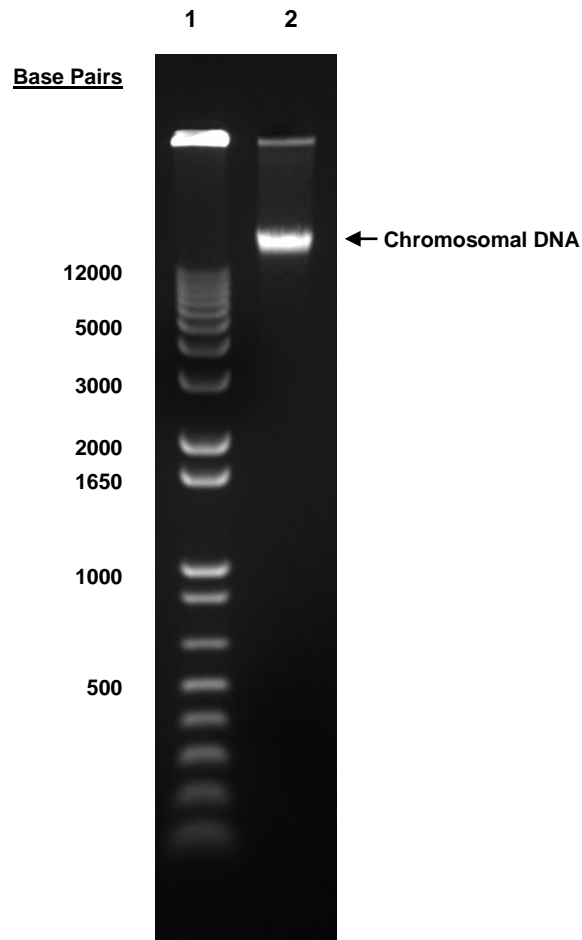
ATCC[®], on behalf of BEI Resources, hereby represents and warrants that the material provided under this certificate has been subjected to the tests and procedures specified and that the results described, along with any other data provided in this certificate, are true and accurate to the best of ATCC[®]'s knowledge.

ATCC[®] is a trademark of the American Type Culture Collection.

You are authorized to use this product for research use only. It is not intended for human use.



Figure 1



Lane 1: Invitrogen™ TrackIt™ 1 Kb Plus DNA Ladder
Lane 2: 200 ng of NR-13351