

***Staphylococcus epidermidis*, Strain M23864:W2**

Catalog No. HM-144

Product Description: *Staphylococcus epidermidis* (*S. epidermidis*), strain M23864:W2 was isolated from human skin.

Lot¹: 58954319

Manufacturing Date: 06JAN2010

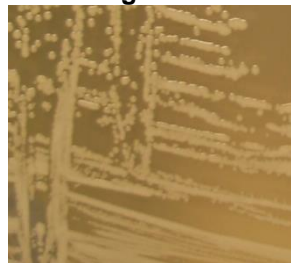
TEST	SPECIFICATIONS	RESULTS
Phenotypic Analysis Cellular morphology Colony morphology ² Hemolysis on blood agar Biochemical Characterization Analytical profile index (API Staph [®]) Catalase	Gram-positive cocci Report results Negative Consistent with <i>S. epidermidis</i> Positive	Gram-positive cocci Circular, low convex, entire and white (Figure 1) Hemolytic (weak) ³ Consistent with <i>S. epidermidis</i> Positive
Genotypic Analysis Sequencing of 16S ribosomal RNA gene (~ 1080 bp) RiboPrinter [®] Microbial Characterization System	Consistent with <i>S. epidermidis</i> Consistent with <i>S. epidermidis</i>	Consistent with <i>S. epidermidis</i> Consistent with <i>S. epidermidis</i>
PCR Assay of Extracted DNA 16S ribosomal RNA gene	~ 1500 bp amplicon	~ 1500 bp amplicon
Viability (post-freeze)²	Growth	Growth

¹*S. epidermidis*, strain M23864:W2 was deposited by Sarah K. Highlander, Associate Professor, Department of Molecular Virology and Microbiology, Baylor College of Medicine, Houston, Texas. HM-144 was produced by inoculation of the deposited material into Brain Heart Infusion Broth (BD 237500) and grown 24 hours at 37°C. Broth inoculum was added to Kolles which were grown 24 hours at 37°C to produce this lot.

²24 hours at 37°C and aerobic atmosphere on Brain Heart Infusion agar

³A small percentage of *S. epidermidis* strains are known to have hemolytic activity (Michelim, L., et al. "Pathogenicity Factors and Antimicrobial Resistance of *Staphylococcus epidermidis* Associated with Nosocomial Infections Occurring in Intensive Care Units." *Braz. J. Microbiol.* 36 (2005): 17-23.

Figure 1



Date: 28 JUL 2010

Signature: Signature on file

Title: Technical Manager, BEI Authentication or designee

ATCC[®], on behalf of BEI Resources, hereby represents and warrants that the material provided under this certificate has been subjected by ATCC[®] to the tests and procedures specified and that the results described, along with any other data provided in this certificate, are true and accurate to the best of ATCC[®]'s knowledge.

ATCC[®] is a trademark of the American Type Culture Collection. You are authorized to use this product for research use only. It is not intended for human use.

