

***Bacteroides* sp., Strain D2**

**Catalog No. HM-28**

**Product Description:** *Bacteroides* sp., strain D2 was isolated from biopsy tissue taken from the rectum of a healthy 44-year old female undergoing a colon cancer screen procedure in Calgary, Alberta, Canada.

**Lot<sup>1</sup>: 58831240**

**Manufacturing Date: 20NOV2009**

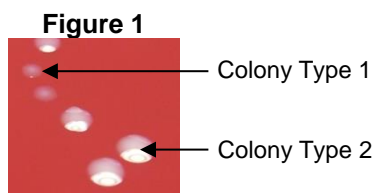
TEST	SPECIFICATIONS	RESULTS
<b>Phenotypic Analysis</b> Cellular morphology Colony morphologies <sup>2,3</sup>  Vitek <sup>®</sup> 2 anaerobe and <i>Corynebacterium</i> (ANC) identification card	Gram-negative rod Report results  Consistent with <i>Bacteroides</i> sp.	Gram-negative rod Colony type 1: Circular, entire, low convex, opaque and gray (Figure 1) Colony type 2: Circular, entire, low convex, opaque and white (Figure 1)  Consistent with <i>Bacteroides</i> sp. <sup>4</sup>
<b>Genotypic Analysis</b> Sequencing of 16S Ribosomal RNA Gene (~ 690 base pairs)	Consistent with <i>Bacteroides</i> sp.	Consistent with <i>Bacteroides</i> sp. <sup>4</sup>
<b>PCR Assay of Extracted DNA</b> 16S ribosomal RNA gene	~ 1500 bp amplicon	~ 1500 bp amplicon
<b>Viability (post-freeze)<sup>3</sup></b>	Growth	Growth

<sup>1</sup>*Bacteroides* sp., strain D2 was deposited by Professor Emma Allen-Vercoe, Department of Molecular and Cellular Biology, University of Guelph, Guelph, Ontario, Canada. HM-28 was produced by inoculation of the deposited material into Modified Chopped Meat Medium ([ATCC medium 1490](#)) and incubated for 48 hours at 37°C and anaerobic atmosphere (80% N<sub>2</sub>:10% CO<sub>2</sub>:10% H<sub>2</sub>).

<sup>2</sup>Two colony types were observed. Plating of individual colony types showed that they reverted to the mixed colony types. The 16S gene of each colony type was sequenced and determined to be 100% identical.

<sup>3</sup>48 hours at 37°C and anaerobic atmosphere (80% N<sub>2</sub>:10% CO<sub>2</sub>:10% H<sub>2</sub>) on Tryptic Soy Agar with 5% defibrinated sheep blood

<sup>4</sup>Completed with individual colony types



**Date:** 12AUG2010

**Signature:** Signature on File

**Title:** Technical Manager, BEI Authentication or designee

ATCC<sup>®</sup>, on behalf of BEI Resources, hereby represents and warrants that the material provided under this certificate has been subjected by ATCC<sup>®</sup> to the tests and procedures specified and that the results described, along with any other data provided in this certificate, are true and accurate to the best of ATCC<sup>®</sup>'s knowledge.

ATCC<sup>®</sup> is a trademark of the American Type Culture Collection. You are authorized to use this product for research use only. It is not intended for human use.

