

Staphylococcus hominis, Strain SK119

Catalog No. HM-119

Product Description: *Staphylococcus hominis* (*S. hominis*), strain SK119 was isolated from normal skin of the left arm of a 47-year-old woman.

Lot¹: 59206192

Manufacturing Date: 04MAY2010

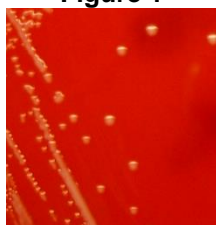
TEST	SPECIFICATIONS	RESULTS
Phenotypic Analysis Cellular morphology Colony morphology ² Hemolysis on blood agar Biochemical Characterization Analytical profile index (API Staph [®]) Catalase	Gram-positive cocci Report results Report results Consistent with <i>S. hominis</i> Positive	Gram-positive cocci Circular, convex, entire and cream colored (Figure 1) Non-hemolytic Consistent with <i>Staphylococcus</i> sp. ³ Positive
Genotypic Analysis Sequencing of 16S ribosomal RNA gene (~ 1300 base pairs) Sequencing of 16S ribosomal RNA gene (~ 1450 base pairs) RiboPrinter [®] Microbial Characterization System	Consistent with GenBank: ACLP00000000 Consistent with <i>S. hominis</i> Consistent with <i>S. hominis</i>	Consistent with GenBank: ACLP00000000 Consistent with <i>S. hominis</i> Consistent with <i>S. hominis</i>
PCR Assay of Extracted DNA 16S ribosomal RNA gene	~ 1500 bp amplicon	~ 1500 bp amplicon
Viability (post-freeze)²	Growth	Growth

¹*S. hominis*, strain SK119 was deposited by Dr. Guillermo I. Perez-Perez, D.Sc., Associate Professor of Medicine, Departments of Medicine and Microbiology; School of Medicine, New York University, New York, New York. HM-119 was produced by inoculation of the deposited material into Brain Heart Infusion Broth and grown 24 hours at 37°C. Broth inoculum was added to Kolles which were grown 24 hours at 37°C to produce this lot.

²24 hours at 37°C and aerobic atmosphere on Tryptic Soy Agar with 5% sheep blood

³The API Staph Identification table indicates that for *S. hominis* nitrate reduction is positive 82% of the time, alkaline phosphatase activity is negative 73% of the time and acidification of sucrose is positive 97% of the time. For HM-119, nitrate reduction was negative, alkaline phosphatase activity was positive and acidification of sucrose was negative, thus the API database could only identify to genus for this isolate.

Figure 1



Date: 13 AUG 2010

Signature: Signature on file

Title: Technical Manager, BEI Authentication or designee

ATCC[®], on behalf of BEI Resources, hereby represents and warrants that the material provided under this certificate has been subjected by ATCC[®] to the tests and procedures specified and that the results described, along with any other data provided in this certificate, are true and accurate to the best of ATCC[®]'s knowledge.

ATCC[®] is a trademark of the American Type Culture Collection.

You are authorized to use this product for research use only. It is not intended for human use.

