

Genomic DNA from *Streptococcus cristatus*, Strain F0329

Catalog No. HM-163D

Product Description: Genomic DNA was obtained from a preparation of *Streptococcus cristatus* (*S. cristatus*; also referred to as *Streptococcus crista*), strain F0329.

Lot¹: 59547197

Manufacturing Date: 15OCT2010

| TEST | SPECIFICATIONS | RESULTS |
|---|--|--|
| Sequencing of 16S Ribosomal RNA Gene (~ 1450 base pairs) | ≥ 99% identical to depositor's sequence Consistent with <i>S. cristatus</i> | ≥ 99% identical to depositor's sequence Consistent with <i>S. cristatus</i> |
| Agarose Gel Electrophoresis | High molecular weight chromosomal DNA | High molecular weight chromosomal DNA (Figure 1) |
| Concentration by PicoGreen[®] Measurement | 0.7 to 1.5 µg in 25 to 100 µL per vial | 1.5 µg in 27 µL per vial (58 µg/mL) |
| Functional Activity by PCR Amplification 16S ribosomal RNA gene | ~ 1500 bp amplicon | ~ 1500 bp amplicon |
| OD₂₆₀/OD₂₈₀ Ratio | 1.7 to 2.0 | 1.9 |
| Bacterial Inactivation 10% of total yield plated on Brain Heart Infusion Agar ^{2,3} | No viable bacteria detected | No viable bacteria detected |

¹The bacterial preparation used for extraction of genomic DNA was produced by Brain Heart Infusion Broth (ATCC medium 44) culture of BEI Resources HM-163, lot 59476559. After incubation for 24 hours at 37°C and 5% CO₂, genomic DNA was extracted using proprietary technology.

²7 days at 37°C and 5% CO₂

³An extraction procedure was used that has been shown to consistently inactivate 100% of Gram-positive and Gram-negative bacteria.

Date: 03 FEB 2011

Signature:



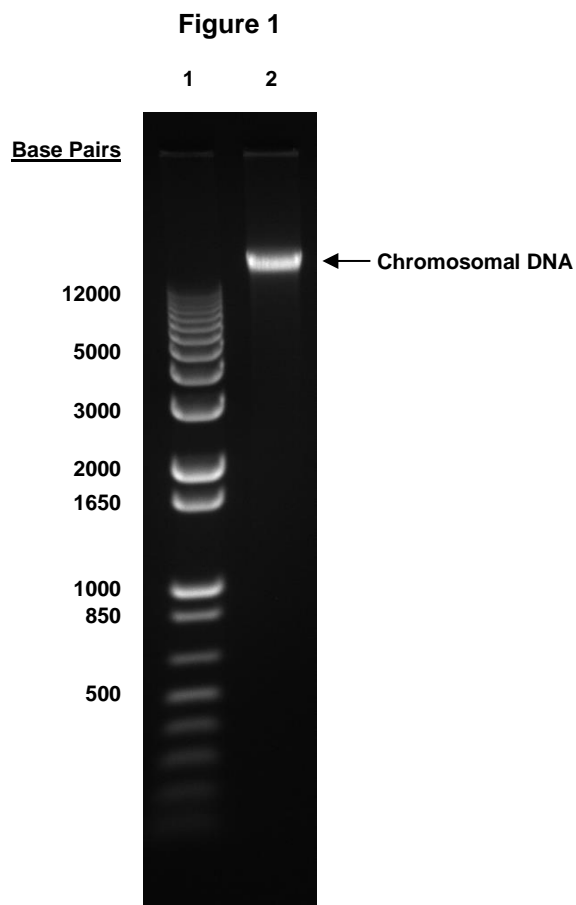
Title: Technical Manager, BEI Authentication or designee

ATCC[®], on behalf of BEI Resources, hereby represents and warrants that the material provided under this certificate has been subjected by ATCC[®] to the tests and procedures specified and that the results described, along with any other data provided in this certificate, are true and accurate to the best of ATCC[®]'s knowledge.

ATCC[®] is a trademark of the American Type Culture Collection.

You are authorized to use this product for research use only. It is not intended for human use.





Lane 1: Invitrogen™ TrackIt 1 Kb Plus DNA Ladder™
Lane 2: 200 ng of HM-163D