

Vector pLNCX2 Containing HLA-B*5701 Allele

Catalog No. NR-2815

Product Description: The HLA-B*5701 allele from a human Major Histocompatibility Complex (MHC) Class I human leukocyte antigen (HLA)-homozygous human B-lymphoblastoid cell line (B-LCL) was amplified by PCR, gel purified, and cloned into the Clontech Laboratories vector, pLNCX2 by the International Histocompatibility Working Group (IHWG). The plasmid was produced in *Escherichia coli* and extracted.¹

Lot¹: 59031994

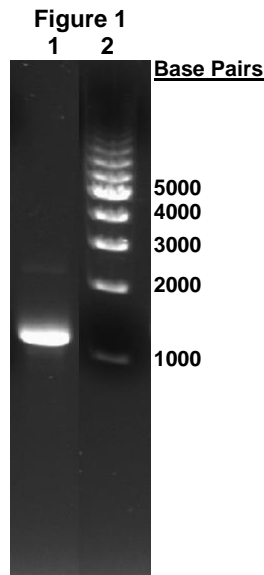
Manufacturing Date: 25MAR2010

TEST	SPECIFICATIONS	RESULTS
PCR Amplification and Sequencing of HLA Insert	~ 1200 bp amplicon Human MHC Class I HLA-B	~ 1200 bp amplicon (Figure 1) Human MHC Class I HLA-B
Agarose Gel Electrophoresis Digestion with <i>HindIII</i> ² and <i>NotI</i> ³	~ 6100 bp vector; ~ 1200 bp insert	~ 6100 bp vector; ~ 1200 bp insert (Figure 2)
PicoGreen[®] Measurement DNA content DNA concentration	20 to 50 ng Report results	27 ng 0.27 ng per μ L (0.27 μ g per mL)
Effective Bacterial Transformation	\geq 100 colonies per ng	\geq 100 colonies per ng

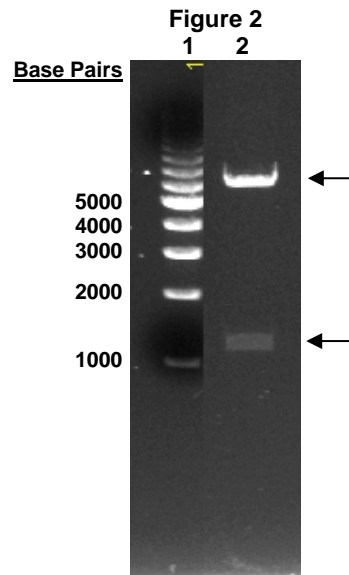
¹Produced in *Escherichia coli* DH5 α ™-T1^R cells (Invitrogen™ 12297-016) and extracted using the EndoFree[®] Plasmid Maxi Kit (QIAGEN[®] 12362)

²*HindIII* (New England BioLabs, Inc. R0104)

³*NotI* (New England BioLabs, Inc. R0189)



Lane 1: PCR Amplicon of HLA Insert
Lane 2: Bio-Rad EZ Load 1 Kb Molecular Ruler



Lane 1: Bio-Rad EZ Load 1 Kb Molecular Ruler
Lane 2: NR-2815 digested with *HindIII* and *NotI*

Date: 05 APR 2011

Signature: *Dorothy C. Young*

Title: Technical Manager, BEI Authentication or designee

ATCC[®], on behalf of BEI Resources, hereby represents and warrants that the material provided under this certificate has been subjected to the tests and procedures specified and that the results described, along with any other data provided in this certificate, are true and accurate to the best of ATCC[®]'s knowledge.

ATCC[®] is a trademark of the American Type Culture Collection.

You are authorized to use this product for research use only. It is not intended for human use.

