

***Lactobacillus crispatus*, Strain MV-1A-US**

Catalog No. HM-637

Product Description: *Lactobacillus crispatus* (*L. crispatus*), strain MV-1A-US was isolated in 2007 from the vaginal mucosa of a healthy U.S. woman.

Lot^{1,2}: 59884455

Manufacturing Date: 13APR2011

TEST	SPECIFICATIONS	RESULTS
Phenotypic Analysis Cellular morphology Colony morphology ^{3,4}	Gram-positive rod Report results	Gram-positive rod Colony type 1: Pinpoint , rough and translucent (Figure 1) Colony type 2: Large, rough and translucent (Figure 1)
Genotypic Analysis Sequencing of 16S ribosomal RNA gene (~ 640 base pairs)	≥ 99% identical to depositor's sequence Consistent with <i>L. crispatus</i>	Pending Consistent with <i>L. crispatus</i>
Viability (post-freeze)⁴	Growth	Growth

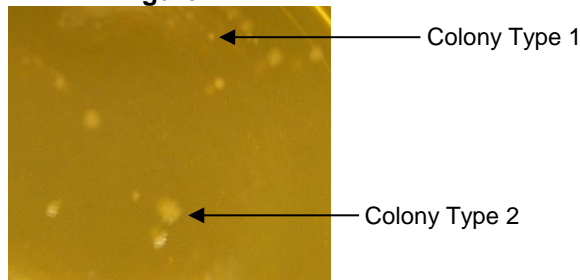
¹Quality control of HMP material is only performed to demonstrate that the material distributed by BEI Resources is identical to the deposited material. It should not be considered a complete characterization of the deposited organism.

²*L. crispatus*, strain MV-1A-US was deposited by Yang Liu, Ph.D., Senior Scientist & Group Leader, Osel Inc., Santa Clara, California. The deposited material was inoculated into Lactobacilli MRS Broth and incubated for 24 hours at 37°C in an aerobic atmosphere with 5% CO₂. The initial growth was passaged once in Lactobacilli MRS Broth for 24 hours at 37°C in an aerobic atmosphere with 5% CO₂ to produce this lot.

³Two colony types were observed. Plating of the individual colony types showed that they reverted to the mixed colony type. The 16S gene of each colony type was sequenced and determined to be identical and consistent with *L. crispatus*.

⁴48 hours at 37°C in an aerobic atmosphere with 5% CO₂ on Lactobacilli MRS Agar

Figure 1



Date: 15 SEP 2011

Signature:

Title: Technical Manager, BEI Authentication or designee

ATCC®, on behalf of BEI Resources, hereby represents and warrants that the material provided under this certificate has been subjected by ATCC® to the tests and procedures specified and that the results described, along with any other data provided in this certificate, are true and accurate to the best of ATCC®'s knowledge.

ATCC® is a trademark of the American Type Culture Collection. You are authorized to use this product for research use only. It is not intended for human use.

