

***Bacillus anthracis* Collagen-like Protein BclA (Locus Tag: BA\_1222) with N-terminal Histidine Tag, Recombinant from *Escherichia coli***

**Catalog No. NR-9577**

This reagent is the property of the U. S. Government.

**Product Description:** NR-9577 is a recombinant form of the *Bacillus anthracis* collagen-like protein (BclA), a major component of the exosporium.

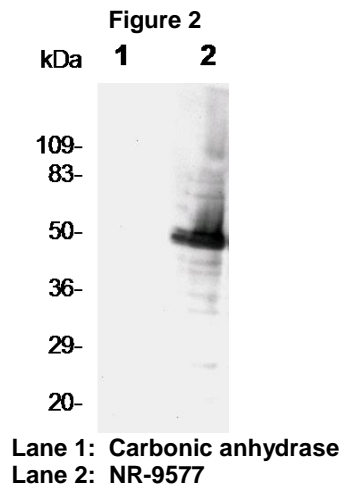
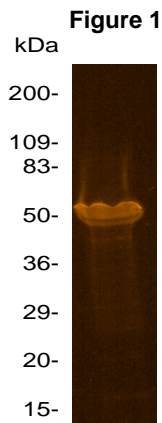
**Lot: 59811959**

**Manufacturing Date: 01SEP2011**

TEST	SPECIFICATIONS	RESULTS
Appearance	Clear and colorless, no particulate matter	Clear and colorless, no particulate matter
SDS-PAGE (SYPRO Orange densitometer scan) <sup>1</sup>	Purified protein represents > 95% of stained protein	Purified protein represents > 95% of stained protein (Figure 1)
SELDI-TOF Mass Spectrometry	Measured mass within 5% of expected mass based on amino acid sequence (39.0 kDa)	Measured mass is within 0.4% of expected mass based on amino acid sequence (38.8 kDa)
Identification by SELDI-TOF Mass Spectrometry of Protease Digested Protein	> 50% of total residues accounted for in peptides of expected mass	71% of total residues accounted for in peptides of expected mass
Concentration by Bicinchoninic Acid Protein Assay	0.5 mg/mL ± 20%	0.52 mg/mL
Protein Content	80 to 120 µg per vial	104 µg/vial
Functional Activity by Western Blot <sup>2</sup> (Figure 2) Recombinant BclA (NR-9577) Carbonic anhydrase	Reactive Non-reactive	Reactive Non-reactive
Sterility	0.22 µm filter-sterilized	0.22 µm filter-sterilized
Endotoxin Content (Limulus Amoebocyte Lysate)	1 to 10000 EU/mg	< 500 EU/mg
Absorbance Ratio (OD <sub>280</sub> /OD <sub>260</sub> )	Report results	1.3

<sup>1</sup>BclA has an aberrant electrophoretic mobility as described in the initial description of the protein.

<sup>2</sup>Using rabbit polyclonal antibody to BclA (BEI Resources NR-9578)



**Date:** 02 NOV 2011

**Signature:** *Dorothy C. Young*

**Title:** Technical Manager, BEI Authentication or designee

ATCC<sup>®</sup>, on behalf of BEI Resources, hereby represents and warrants that the material provided under this certificate has been subjected by the contractor to the tests and procedures specified and that the results described, along with any other data provided in this certificate, are true and accurate to the best of ATCC<sup>®</sup>'s knowledge.

ATCC<sup>®</sup> is a trademark of the American Type Culture Collection.

You are authorized to use this product for research use only. It is not intended for human use.

