

***Bifidobacterium breve*, Strain EX336960VC19**

Catalog No. HM-412

Product Description: *Bifidobacterium breve* (*B. breve*), strain EX336960VC19 was isolated from a human mid-vaginal wall in March 2010 in Richmond, Virginia.

Lot^{1,2}: 59994679

Manufacturing Date: 10AUG2011

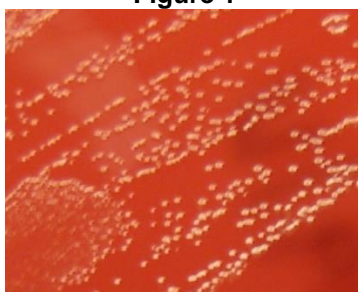
TEST	SPECIFICATIONS	RESULTS
Phenotypic Analysis Cellular morphology ³ Colony morphology ³	Gram-positive rod Report results	Gram-positive rod Circular, convex, entire and light gray (Figure 1)
Genotypic Analysis Sequencing of 16S ribosomal RNA gene (~ 1370 base pairs)	≥ 99% identical to depositor's sequence Consistent with <i>B. breve</i>	Pending Consistent with <i>B. breve</i>
Viability (post-freeze)³	Growth	Growth

¹Quality control of HMP material is only performed to demonstrate that the material distributed by BEI Resources is identical to the deposited material. It should not be considered a complete characterization of the deposited organism.

²*B. breve*, strain EX336960VC19 was deposited by Professor Gregory A. Buck, Director, Center for the Study of Biological Complexity, Department of Microbiology and Immunology, Virginia Commonwealth University Medical Center, Richmond, Virginia. HM-412 was produced by inoculation of the deposited material into Reinforced Clostridial Broth ([ATCC medium 1053](#)) and incubated for 72 hours at 37°C in an anaerobic atmosphere (80% N₂:10% CO₂:10% H₂). The material from the initial growth was passaged once in Reinforced Clostridial Medium for 48 hours at 37°C in an anaerobic atmosphere to produce this lot.

³48 hours at 37°C in an anaerobic atmosphere (80% N₂:10% CO₂:10% H₂) on Tryptic Soy Agar with 5% defibrinated sheep blood

Figure 1



Date: 07 NOV 2011

Signature:

Title: Technical Manager, BEI Authentication or designee

ATCC®, on behalf of BEI Resources, hereby represents and warrants that the material provided under this certificate has been subjected by ATCC® to the tests and procedures specified and that the results described, along with any other data provided in this certificate, are true and accurate to the best of ATCC®'s knowledge.

ATCC® is a trademark of the American Type Culture Collection.

You are authorized to use this product for research use only. It is not intended for human use.

