

**Genomic DNA from *Clostridium symbiosum*, Strain WAL-14163**

**Catalog No. HM-309D**

**Product Description:** Genomic DNA was obtained from a preparation of *Clostridium symbiosum* (*C. symbiosum*), strain WAL-14163.

**Lot<sup>1,2</sup>: 59925961**

**Manufacturing Date: 15AUG2011**

TEST	SPECIFICATIONS	RESULTS
<b>Sequencing of 16S Ribosomal RNA Gene (1420 base pairs)</b>	≥ 99% identical to depositor's sequence Consistent with <i>C. symbiosum</i>	≥ 99% identical to depositor's sequence Consistent with <i>C. symbiosum</i>
<b>Agarose Gel Electrophoresis</b>	High molecular weight chromosomal DNA	High molecular weight chromosomal DNA (Figure 1)
<b>Concentration by PicoGreen<sup>®</sup> Measurement</b>	0.7 to 1.5 µg in 25 to 100 µL per vial	0.9 µg in 26 µL per vial (35 µg/mL)
<b>Functional Activity by PCR Amplification</b> 16S ribosomal RNA gene	~ 1500 bp amplicon	~ 1500 bp amplicon
<b>OD<sub>260</sub>/OD<sub>280</sub> Ratio</b>	1.7 to 2.0	1.7
<b>Bacterial Inactivation</b> 10% of total yield plated on Tryptic Soy Agar with 5% defibrinated sheep blood <sup>3,4</sup>	No viable bacteria detected	No viable bacteria detected

<sup>1</sup>Quality control of HMP organisms used for DNA extraction is only performed to demonstrate that the material produced by BEI Resources is identical to the deposited material. It should not be considered a complete characterization of the deposited organism.

<sup>2</sup>The bacterial preparation used for extraction of genomic DNA was produced by Modified Chopped Meat ([ATCC medium 1490](#)) Broth culture of BEI Resources HM-309 (Lot 60096270). After incubation for 72 hours at 37°C and anaerobic atmosphere (80% N<sub>2</sub>:10% CO<sub>2</sub>:10% H<sub>2</sub>), genomic DNA was extracted using proprietary technology.

<sup>3</sup>7 days at 37°C and anaerobic atmosphere

<sup>4</sup>An extraction procedure was used that has been shown to consistently inactivate 100% of Gram-positive and Gram-negative bacteria.

**Date:** 10 NOV 2011

**Signature:** 

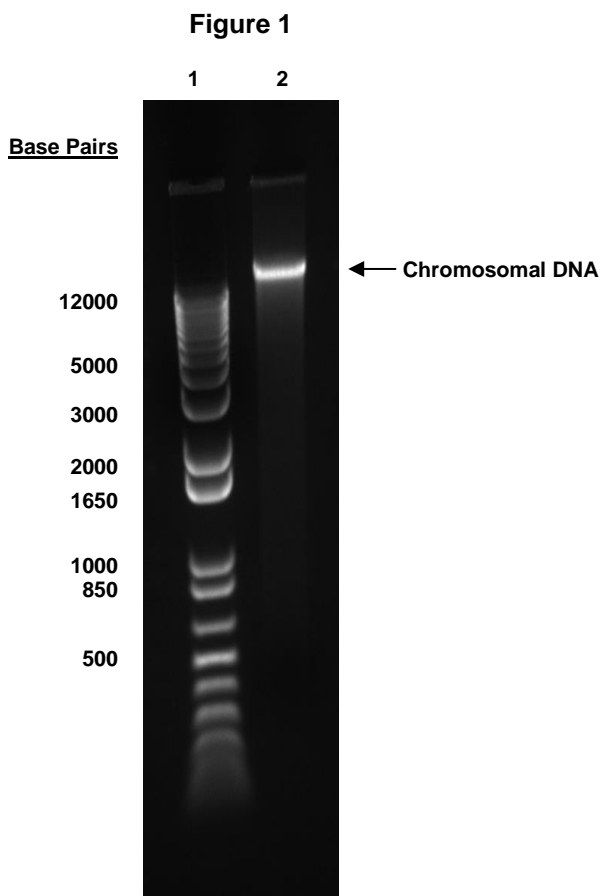
**Title:** Technical Manager, BEI Authentication or designee

ATCC<sup>®</sup>, on behalf of BEI Resources, hereby represents and warrants that the material provided under this certificate has been subjected by ATCC<sup>®</sup> to the tests and procedures specified and that the results described, along with any other data provided in this certificate, are true and accurate to the best of ATCC<sup>®</sup>'s knowledge.

ATCC<sup>®</sup> is a trademark of the American Type Culture Collection.

You are authorized to use this product for research use only. It is not intended for human use.





Lane 1: Invitrogen™ TrackIt 1 Kb Plus DNA Ladder™  
Lane 2: 200 ng of HM-309D