

***Bacillus anthracis* Spore Coat Protein GerQ (Locus Tag: BA\_5641) with N-Terminal Histidine Tag, Recombinant from *Escherichia coli***

**Catalog No. NR-10435**

This reagent is the tangible property of the U.S. Government.

**Product Description:** NR-10435 is a recombinant form of the *Bacillus anthracis* (*B. anthracis*) spore coat protein GerQ (also YwdL; locus\_tag: BA\_5641), a component of the proteinaceous layer surrounding the spore's outer membrane.

**Lot: 59286320**

**Manufacturing Date: 01SEP2011**

TEST	SPECIFICATIONS	RESULTS
Appearance	Clear and colorless	Clear and colorless
SDS-PAGE (SYPRO Orange densitometer scan)	Report results	18 kDa band represents 60% of total protein <sup>1</sup> (Figure 1)
SELDI-TOF Mass Spectrometry	Measured mass within 5% of expected mass based on amino acid sequence (18460 Da)	Measured mass within 1% of expected mass based on amino acid sequence (18329 Da)
Concentration by Bicinchoninic Acid Protein Assay	Report results	0.02 mg/mL
Protein Content	Report results	0.01 mg/vial
Functional Activity by Western Blot <sup>2</sup> (Figure 2) Recombinant GerQ (NR-10435) Carbonic anhydrase	Reactive Non-reactive	Reactive <sup>1</sup> Non-reactive
Sterility	0.22 µm filter-sterilized	0.22 µm filter-sterilized
Endotoxin Content (Limulus Amoebocyte Lysate Assay)	Between 1 and 10000 EU/mg	< 6250 EU/mg

<sup>1</sup>Higher molecular weight species may represent aggregates of the monomer.

<sup>2</sup>Using rabbit polyclonal antibody to GerQ (BEI Resources NR-10436)

Figure 1 – SDS-PAGE

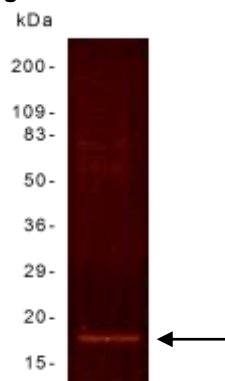
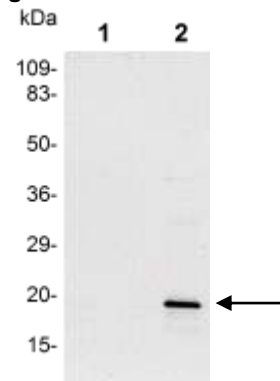


Figure 2 – Western Blot



Lane 1: Carbonic Anhydrase  
Lane 2: NR-10435

## Certificate of Analysis for NR-10435

**Date:** 01 DEC 2014

**Signature:** 

**Title:** Technical Manager, BEI Authentication or designee

ATCC®, on behalf of BEI Resources, hereby represents and warrants that the material provided under this certificate has been subjected by the contractor to the tests and procedures specified and that the results described, along with any other data provided in this certificate, are true and accurate to the best of ATCC®'s knowledge.

ATCC® is a trademark of the American Type Culture Collection.  
You are authorized to use this product for research use only. It is not intended for human use.

