

Helicobacter pylori, Strain 35A

Catalog No. HM-274

Product Description: *Helicobacter pylori* (*H. pylori*), strain 35A was isolated from a human stomach.

Lot^{1,2}: 59865662

Manufacturing Date: 24APR2011

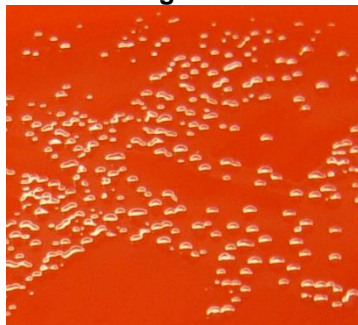
TEST	SPECIFICATIONS	RESULTS
Phenotypic Analysis Cellular morphology Colony morphology ³	Report results Report results	Gram-negative rod Circular, entire, translucent and glistening (Figure 1)
Genotypic Analysis Sequencing of 16S ribosomal RNA gene (~ 1420 base pairs)	≥ 99% identical to GenBank: CP002096 (<i>Helicobacter pylori</i> , strain 35A)	≥ 99% identical to GenBank: CP002096 (<i>Helicobacter pylori</i> , strain 35A)
Viability (post-freeze)³	Growth	Growth

¹Quality control of HMP material is only performed to demonstrate that the material distributed by BEI Resources is identical to the deposited material. It should not be considered a complete characterization of the deposited organism.

²*H. pylori*, strain 35A was deposited by Professor Sarah K. Highlander, Department of Molecular Virology and Microbiology, Baylor College of Medicine, Houston, Texas. The deposited material was inoculated into a biphasic culture of Tryptic Soy Broth on Tryptic Soy Agar with 5% defibrinated sheep blood slant and incubated for 72 hours at 37°C in a microaerophilic atmosphere (~ 6-16% O₂ and 2-10% CO₂). The material from the initial growth was added to Kolles which were grown for 48 hours at 37°C in a microaerophilic atmosphere to produce this lot.

³72 hours at 37°C in a microaerophilic atmosphere on Tryptic Soy Agar with 5% defibrinated sheep blood

Figure 1



Date: 06 FEB 2012

Signature:

Title: Technical Manager, BEI Authentication or designee

ATCC®, on behalf of BEI Resources, hereby represents and warrants that the material provided under this certificate has been subjected by ATCC® to the tests and procedures specified and that the results described, along with any other data provided in this certificate, are true and accurate to the best of ATCC®'s knowledge.

ATCC® is a trademark of the American Type Culture Collection. You are authorized to use this product for research use only. It is not intended for human use.

