

***Clostridium citroniae*, Strain WAL-17108**

Catalog No. HM-315

Product Description: *Clostridium citroniae* (*C. citroniae*), strain WAL-17108 was isolated from the stool of an autistic boy.

Lot^{1,2}: 60574079

Manufacturing Date: 15DEC2011

TEST	SPECIFICATIONS	RESULTS
Phenotypic Analysis Cellular morphology ³ Colony morphology ⁴	Report results Report results	Gram-negative rod Irregular, slightly peaked, undulate, rough and gray (Figure 1)
Genotypic Analysis Sequencing of 16S ribosomal RNA gene (1400 base pairs)	≥ 99% identical to GenBank: ADLJ01000059 (<i>C. citroniae</i> , strain WAL-17108)	≥ 99% identical to GenBank: ADLJ01000059 (<i>C. citroniae</i> , strain WAL-17108)
Viability (post-freeze)⁴	Growth	Growth

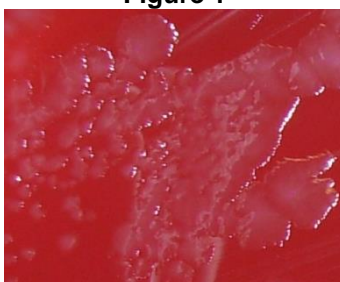
¹Quality control of HMP material is only performed to demonstrate that the material distributed by BEI Resources is identical to the deposited material. It should not be considered a complete characterization of the deposited organism.

²*C. citroniae*, strain WAL-17108 was deposited by Emma Allen-Vercoe, Department of Molecular and Cellular Biology, University of Guelph, Guelph, Ontario, Canada. The deposited material was inoculated into Modified Reinforced Clostridial Broth (ATCC medium 2107) and incubated for 72 hours at 37°C and anaerobic atmosphere (80% N₂:10% CO₂:10% H₂). The material from the initial growth was passaged once in Modified Reinforced Clostridial Broth for 72 hours at 37°C and anaerobic atmosphere to produce this lot.

³*C. citroniae* is characterized as Gram-positive, but the published literature for this species shows that it often displays a Gram-negative phenotype (Warren, Y. A., et al. "*Clostridium aldenense* sp. nov. and *Clostridium citroniae* sp. nov. Isolated from Human Clinical Infections." *J. Clin. Microbiol.* 44 (2006): 2416-2422. PubMed: 16825358.).

⁴72 hours at 37°C and anaerobic atmosphere on Tryptic Soy Agar with 5% defibrinated sheep blood

Figure 1



Date: 27 APR 2012

Signature:

Title: Technical Manager, BEI Authentication or designee

ATCC®, on behalf of BEI Resources, hereby represents and warrants that the material provided under this certificate has been subjected to the tests and procedures specified and that the results described, along with any other data provided in this certificate, are true and accurate to the best of ATCC®'s knowledge.

ATCC® is a trademark of the American Type Culture Collection. You are authorized to use this product for research use only. It is not intended for human use.

