

## Genomic DNA from *Burkholderia pseudomallei*, Strain K96243

**Catalog No. NR-9320**

**Product Description:** Genomic DNA was isolated from a preparation of *Burkholderia pseudomallei* (*B. pseudomallei*), strain K96243.

**Lot<sup>1</sup>: 57960660**

**Manufacturing Date: 04DEC2007**

TEST	SPECIFICATIONS	RESULTS
<b>Sequencing of 16S Ribosomal RNA Gene</b> (~ 1415 base pairs)	Identical to BEI Resources NR-4073 Identical to GenBank BX571965 and BX571966 Consistent with <i>B. pseudomallei</i>	Identical to BEI Resources NR-4073 Identical to GenBank BX571965 and BX571966 Consistent with <i>B. pseudomallei</i> <sup>2</sup>
<b>Agarose Gel Electrophoresis</b>	High molecular weight chromosomal DNA	High molecular weight chromosomal DNA (Figure 1)
<b>Concentration by PicoGreen<sup>®</sup> Measurement</b>	4 to 6 µg in 25 to 100 µL per vial	4.1 µg in 86 µL per vial (48 µg/mL)
<b>Functional Activity by PCR Amplification</b> 16S ribosomal RNA gene	~ 1500 bp amplicon	~ 1500 bp amplicon
<b>OD<sub>260</sub>/OD<sub>280</sub> Ratio</b>	1.7 to 1.9	1.7
<b>Bacterial Inactivation</b> 10% of total yield plated on agar <sup>3</sup>	No viable bacteria detected	No viable bacteria detected

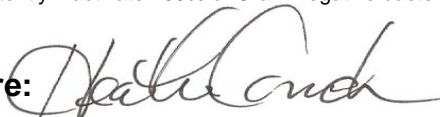
<sup>1</sup>*B. pseudomallei*, strain K96243 was deposited by Dr. Herbert P. Schweizer of the Department of Microbiology, Immunology and Pathology, College of Veterinary Medicine and Biomedical Sciences, Colorado State University, Fort Collins, Colorado. The bacterial preparation used for extraction of genomic DNA was produced from the deposited material. Genomic DNA was extracted using proprietary technology.

<sup>2</sup>Also consistent with other *Burkholderia* species

<sup>3</sup>An extraction procedure was used that has been shown to consistently inactivate 100% of Gram-negative bacteria.

**Date:** 24 MAY 2012

**Signature:**



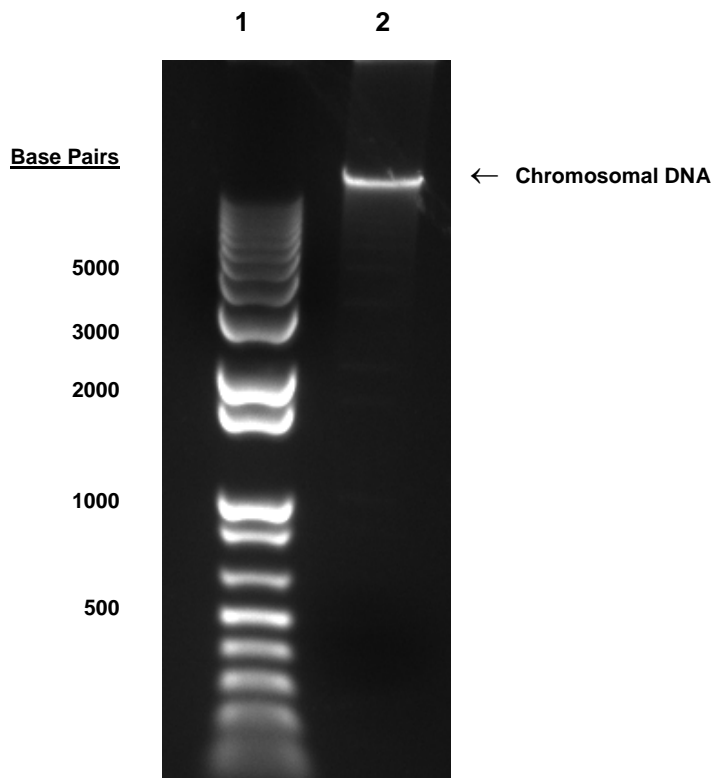
**Title:** Technical Manager, BEI Authentication or designee

ATCC<sup>®</sup>, on behalf of BEI Resources, hereby represents and warrants that the material provided under this certificate has been subjected to the tests and procedures specified and that the results described, along with any other data provided in this certificate, are true and accurate to the best of ATCC<sup>®</sup>'s knowledge.

ATCC<sup>®</sup> is a trademark of the American Type Culture Collection.

You are authorized to use this product for research use only. It is not intended for human use.

Figure 1



Lane 1: Invitrogen™ TrackIt™ 1 Kb Plus DNA Ladder  
Lane 2: 200 ng of NR-9320