

**Vaccinia Virus, Western Reserve, L1R Protein with C-Terminal Histidine Tag, Recombinant from Baculovirus**

**Catalog No. NR-2625**

**Product Description:** NR-2625 is a recombinant form of the L1R membrane glycoprotein (L1Rt; residues 1 to 185, C-terminal histidine-tagged) of the Western Reserve (WR) strain of vaccinia virus. NR-2625 was produced in cabbage looper (*Trichoplusia ni*) insect larvae using a baculovirus expression vector system<sup>1</sup> and was purified using nickel affinity chromatography.

**Lot: 60860934**

**Manufacturing Date: 05APR2012**

TEST	SPECIFICATIONS	RESULTS
<b>SDS-PAGE (Coomassie Blue Densitometer Scan)</b>	Dominant band near 28 kDa marker ≥ 95% pure	Dominant band near 28 kDa marker > 99% pure (Figure 1)
<b>Identification by Western Blot Analysis</b> Mouse monoclonal antibody to L1R <sup>2</sup> Mouse monoclonal antibody to A33R <sup>3</sup>	Reactive Not reactive	Reactive (Figure 2) Not reactive
<b>Demonstration of Protein Glycosylation</b>	Size reduction of protein observed on SDS-PAGE when treated with de-glycosylating enzymes N-glycosidase F	Size reduction of protein observed on SDS-PAGE when treated with de-glycosylating enzyme N-glycosidase F (Figure 3)
<b>Concentration by Spectrophotometer at OD<sub>280</sub></b>	1.0 mg/mL ± 0.1 mg/mL	1.05 mg/mL
<b>Filtration</b>	0.22 µm filtered	0.22 µm filtered

<sup>1</sup>PERLXpress™, Chesapeake Protein Expression and Recovery Labs (PERL)

<sup>2</sup>BEI Resources NR- NR-417

<sup>3</sup>BEI Resources NR-565

**Date:** 14 AUG 2012

**Signature:** 

**Title:** Technical Manager, BEI Authentication or designee

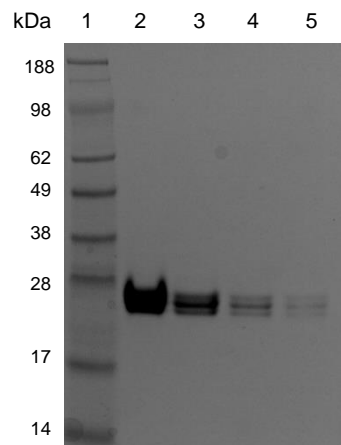
ATCC®, on behalf of BEI Resources, hereby represents and warrants that the material provided under this certificate has been subjected by the contractor to the tests and procedures specified and that the results described, along with any other data provided in this certificate, are true and accurate to the best of ATCC®'s knowledge.

ATCC® is a trademark of the American Type Culture Collection.

You are authorized to use this product for research use only. It is not intended for human use.

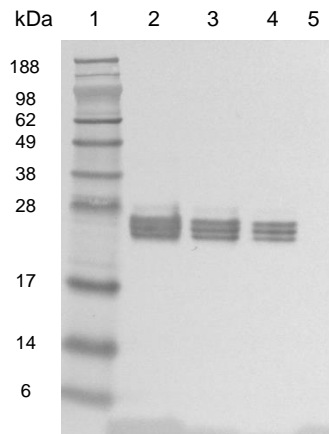


**Figure 1: SDS-PAGE**



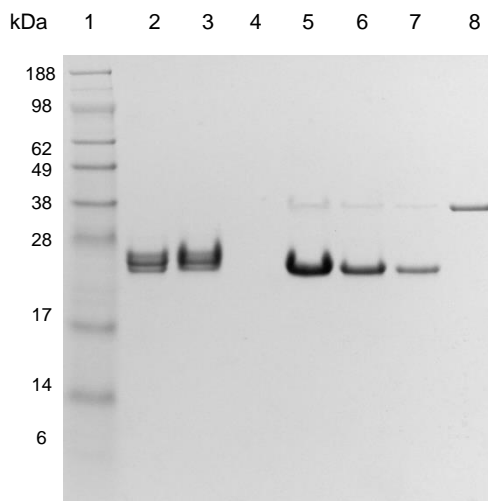
Lane 1: SeeBlue® Plus2 MW Marker (Invitrogen™ LC5925)  
 Lane 2: 10 µg NR-2625  
 Lane 3: 5 µg NR-2625  
 Lane 4: 2.5 µg NR-2625  
 Lane 5: 1.25 µg NR-2625

**Figure 2: Western Blot with Monoclonal Anti-L1R**



Lane 1: SeeBlue® Plus2 MW Marker (Invitrogen™ LC5925)  
 Lane 2: 2.5 µg NR-2625  
 Lane 3: 1.25 µg NR-2625  
 Lane 4: 0.63 µg NR-2625  
 Lane 5: 2.5 µg A33R

**Figure 3: SDS-PAGE PNGase-Treated**



Lane 1: SeeBlue® Plus2 MW marker (Invitrogen™ LC5925)  
 Lane 2: 5 µg NR-2625  
 Lane 3: 5 µg NR-2625, Neg. PNGaseF  
 Lane 4: Blank  
 Lane 5: 5 µg NR-2625, PNGaseF Digest  
 Lane 6: 2.5 µg NR-2625, PNGaseF Digest  
 Lane 7: 1.25 µg NR-2625, PNGaseF Digest  
 Lane 8: 1.5 µg PNGaseF Enzyme