

Vaccinia Virus (WR) L1R Protein with C-terminal Histidine Tag, Recombinant from baculovirus

Catalog No. NR-2625

Product Description: NR-2625 is a recombinant form of the L1R membrane glycoprotein (L1Rt; residues 1 to 185, C-terminal histidine-tagged) of the Western Reserve (WR) strain of vaccinia virus. NR-2625 was produced in cabbage looper (*Trichoplusia ni*) insect larvae using a baculovirus expression vector system¹ and was purified using nickel affinity chromatography.

Lot: 5051776

Manufacturing Date: 01MAR2006

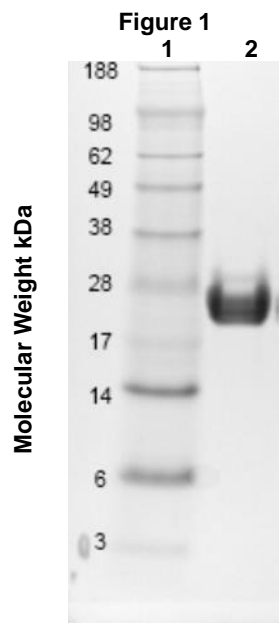
TEST	SPECIFICATIONS	RESULTS
SDS-PAGE (Coomassie Blue densitometer scan)	Protein band of interest accounts for $\geq 95\%$ of staining intensity	Dominant band near 28 kDa marker accounts for $\geq 99\%$ of staining intensity (Figure 1)
Identification and Functional Activity by Western Blot Analysis Human polyclonal anti-VV immune globulin (VIG) ² Mouse monoclonal antibodies to VV (WR) L1R residues 1-185 ³ Mouse monoclonal antibody to VV (WR) A33R residues 58-185 ⁴	Reactive Reactive Not reactive	Reactive Reactive (representative data in Figure 2) Not reactive
Demonstration of Protein Glycosylation	Size reduction of protein observed on SDS-PAGE when treated with de-glycosylating enzymes N-glycosidase F	Size reduction of protein observed on SDS-PAGE when treated with de-glycosylating enzyme N-glycosidase F (see Figure 3)
Concentration by Spectrophotometer at OD₂₈₀	1.0 mg/mL \pm 0.1 mg/mL	1.0 mg/mL

¹PERLXpress™, Chesapeake Protein Expression and Recovery Labs (PERL)

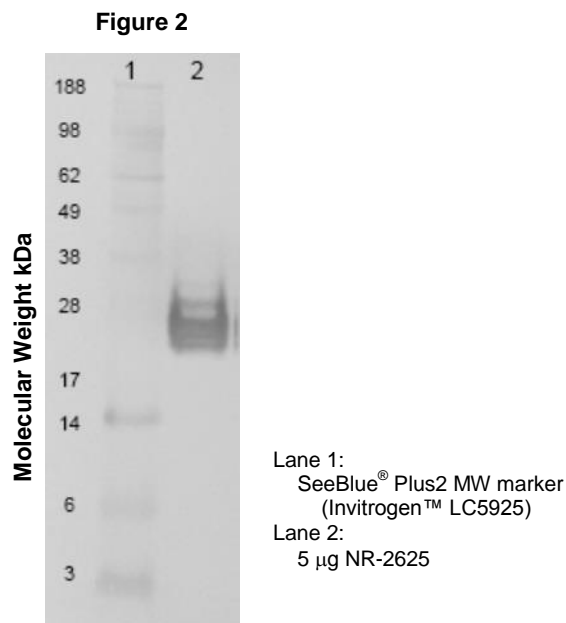
²BEI Resources NR-650

³BEI Resources NR- NR-417 to NR-421 and NR-566

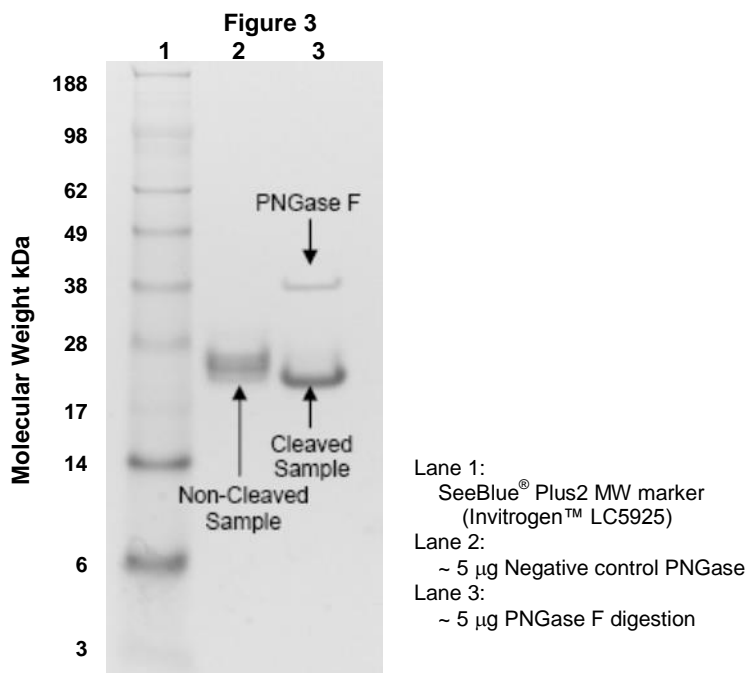
⁵BEI Resources NR-565



Lane 1:
SeeBlue® Plus2 MW marker
(Invitrogen™ LC5925)
Lane 2:
10 µg NR-2625



Lane 1:
SeeBlue® Plus2 MW marker
(Invitrogen™ LC5925)
Lane 2:
5 µg NR-2625



Date: 03MAR2011

Signature: *Dorothy C. Young*

Title: Technical Manager, BEI Authentication or designee

ATCC®, on behalf of BEI Resources, hereby represents and warrants that the material provided under this certificate has been subjected by the contractor to the tests and procedures specified and that the results described, along with any other data provided in this certificate, are true and accurate to the best of ATCC®'s knowledge.

ATCC® is a trademark of the American Type Culture Collection.

You are authorized to use this product for research use only. It is not intended for human use.

