

Escherichia coli, Strain 4.0967

Catalog No. NR-17633

Product Description: *Escherichia coli* (*E. coli*), strain 4.0967, serotype O145:H2, was isolated from rabbit and has been typed as a Shiga toxin-producing *E. coli* (STEC) strain. The *E. coli* 4.0967 genome encodes for Shiga-like type II toxin (Stx2) but not for Shiga-like type I toxin (Stx1).

Lot¹: 59413890

Manufacturing Date: 18AUG2010

TEST	SPECIFICATIONS	RESULTS
Phenotypic Analysis Cellular morphology Colony morphology ² Analytical profile index (API [®] 20 E)	Report results Report results Consistent with <i>E. coli</i>	Gram-negative rod Circular, convex, entire and translucent (Figure 1) Consistent with <i>E. coli</i>
Genotypic Analysis Sequencing of 16S ribosomal RNA gene (~ 1480 base pairs) PCR amplification of chromosomal borne virulence markers ⁴ <i>stx1</i> <i>stx2</i>	Consistent with <i>E. coli</i> Report results Report results	Consistent with <i>E. coli</i> ³ Negative Positive
Viability (post-freeze)²	Growth	Growth

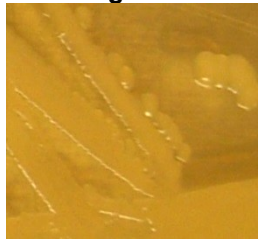
¹*E. coli*, strain 4.0967 was deposited by C. DebRoy, Ph.D., Director, *E. coli* Reference Center, Department of Veterinary and Biomedical Sciences, College of Agricultural Sciences, The Pennsylvania State University, University Park, Pennsylvania. NR-17633 was produced by inoculation of the deposited material into Tryptic Soy broth and grown 24 hours at 37°C in an aerobic atmosphere. Broth inoculum was added to kolles which were grown 24 hours at 37°C in an aerobic atmosphere to produce this lot.

²24 hours at 37°C in an aerobic atmosphere on Tryptic Soy agar

³Also consistent with *Shigella* species

⁴Performed using the Diarrheagenic *E. coli* 12-Target Multiplex PCR for Virulence Typing Assay (BEI Resources NR-13439); the primers for CVD432, *aggR*, *bfpA*, *esth*, EAF and *astA* are described in Kimata, K., et al. "Rapid Categorization of Pathogenic *Escherichia coli* by Multiplex PCR." *Microbiol. Immunol.* 49 (2005): 485-492. PubMed: 15965295.

Figure 1



Date: 18 MAY 2015

Signature:

BEI Resources Authentication

ATCC[®], on behalf of BEI Resources, hereby represents and warrants that the material provided under this certificate has been subjected to the tests and procedures specified and that the results described, along with any other data provided in this certificate, are true and accurate to the best of ATCC[®]'s knowledge.

ATCC[®] is a trademark of the American Type Culture Collection.

You are authorized to use this product for research use only. It is not intended for human use.

