

Polyclonal Anti-*Mycobacterium tuberculosis* CFP minus LAM (antiserum, Rabbit)**Catalog No. NR-13809**

This reagent is the tangible property of the U.S. Government.

Product Description:

Antibody Designation: C293

Polyclonal antiserum to the culture filtrate proteins minus lipoarabinomannan (CFP-LAM) of *Mycobacterium tuberculosis*, strain H37Rv was produced in rabbits. The antiserum is reported to be active in ELISA and Western Blot assays.

Lot: 61391651**Manufacturing Date: 15JAN2013**

Production and QC testing were performed by Colorado State University. The Colorado State University documentation for lot 13.Anti-CFP(-)LAM.1.8.rp is attached.

ATCC[®], on behalf of BEI Resources, hereby represents and warrants that the material provided under this certificate has been subjected by the contractor to the tests and procedures specified and that the results described, along with any other data provided in this certificate, are true and accurate to the best of ATCC[®]'s knowledge.

ATCC[®] is a trademark of the American Type Culture Collection.

You are authorized to use this product for research use only. It is not intended for human use.



TB Contract Antibody QC Sheet

General Information:

Product: Anti-CFP(-)LAM Rabbit Polyclonal Antibody (C293)
Lot Number: 13.Anti-CFP(-)LAM.1.8.rp
Species: *Mycobacterium tuberculosis*
Strain: H37Rv
Type: Rabbit Sera

Production Information:

Cell Line: _____ SOP#: _____ Notebook/pp: _____
Amount of CS Harvested: _____ Clarity: clear
IgG Purification: _____ SOP#: _____ Notebook/pp: _____

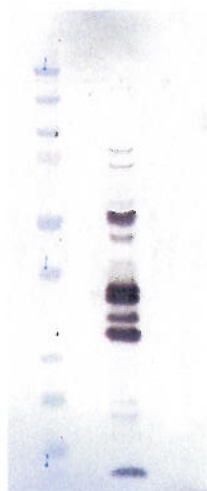
QC Information:

Filtered with 0.2 μ m PES filter
Tested Against: CFP SOP#: _____
Notebook/pp: Keri Wright, Antibody Notebook #3 Y3 pAb, pgs 36 - 38
Titer: 1:10,000 Western blot: X ELISA: _____

Special Instructions:

QC Western blot:

1. Protein Standard
2. 2 μ g CFP



Aliquot Information: 100 x 0.1 ml, 30 x 0.1 ml and 1 x 135 ml

*Aliquot information reflects aliquots made at the time of QC. Bulk aliquots will be broken down as needed.

Keri Wright 11/15/13
Research Associate / Date

[Signature] 1/15/2013
Lab Supervisor / Date