

Salmonella enterica subsp. enterica, Strain 9640 (Serovar Dublin)

Catalog No. NR-22060

Product Description: *Salmonella enterica* (*S. enterica*) subsp. *enterica*, serovar Dublin, strain 9640 was isolated in 2004 from cattle feces in Washington State, USA.

Lot¹: 61302040

Manufacturing Date: 18OCT2012

TEST	SPECIFICATIONS	RESULTS
Phenotypic Analysis Cellular morphology Colony morphology ² Analytical profile index (API [®] 20 E) ³ Vitek [®] Gram-negative identification card (GN)	Report results Report results Consistent with <i>Salmonella</i> spp. Consistent with <i>S. enterica</i>	Gram-negative rods Circular, low convex, entire, smooth and gray (Figure 1) Consistent with <i>Salmonella</i> spp. Consistent with <i>S. enterica</i> subsp. <i>enterica</i>
Genotypic Analysis Sequencing of 16S ribosomal RNA gene (~ 1490 base pairs) Riboprinter [®] Microbial Characterization System	Consistent with <i>S. enterica</i> Consistent with <i>S. enterica</i>	Consistent with <i>S. enterica</i> subsp. <i>enterica</i> Consistent with <i>S. enterica</i> (PvuII Group I) ⁴
Serogroup Analysis	Report results	Serogroup D ⁵
Viability (post-freeze)²	Growth	Growth

¹NR-22060 was produced by inoculation of the deposited material into Tryptic Soy broth and grown 24 hours in an aerobic atmosphere at 37°C. Broth inoculum was added to kolles which was grown 24 hours at 37°C and aerobic atmosphere to produce this lot.

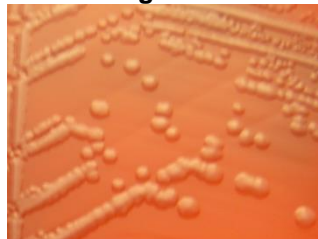
²24 hours at 37°C in an aerobic atmosphere on Tryptic Soy agar with 5% defibrinated sheep blood

³Additional serological tests are required to determine *Salmonella* species using API[®] 20 E

⁴PvuII group I contains serovars Dublin, San Diego and Enteritidis

⁵Serogroup D contains serovar Dublin in addition to other serovars (Ng, S. P., et al. "Detection and Serogroup Differentiation of *Salmonella* spp. in Food within 30 Hours by Enrichment-Immunoassay with a T6 Monoclonal Antibody Capture Enzyme-Linked Immunosorbent Assay." *Appl. Environ. Microbiol.* 62 (1996): 2794-2302. PubMed: 8779567.).

Figure 1



Date: 15 MAY 2013

Signature:

Title: Technical Manager, BEI Authentication or designee

ATCC[®], on behalf of BEI Resources, hereby represents and warrants that the material provided under this certificate has been subjected to the tests and procedures specified and that the results described, along with any other data provided in this certificate, are true and accurate to the best of ATCC[®]'s knowledge.

ATCC[®] is a trademark of the American Type Culture Collection.

You are authorized to use this product for research use only. It is not intended for human use.

