

Candida albicans, Strain P57072

Catalog No. NR-29435

Product Description: *Candida albicans* (*C. albicans*), strain P57072 is a bloodstream isolate from a person with a bloodstream infection collected in Iowa City, Iowa, USA, in 2000. Strain P57072 is a member of genetic clade II and has an alpha/alpha *MTL* genotype.

Lot¹: 60842874

Manufacturing Date: 16APR2012

TEST	SPECIFICATIONS	RESULTS
Phenotypic Analysis		
Cellular morphology ²	Report results	Globose to short-ovoid, usually single or budding, occasionally forming short chains (Figure 1A)
Colony morphology ²	Report results	Cream-coloured, smooth, glistening, dome-shaped, often becoming wrinkled with a mycelia border (Figure 1B)
CHROMagar Candida Testing ³	Green colonies (<i>C. albicans</i>)	Green colonies (<i>C. albicans</i>)
Biochemical tests: Vitek 2 Systems Version: 05.01 (YST card)	Consistent with <i>C. albicans</i>	Consistent with <i>C. albicans</i>
Genotypic Analysis		
Sequencing of partial 18S rRNA gene, internal transcribed spacer (ITS) 1, 5.8S rRNA gene, ITS 2, partial 28S rRNA (~ 855 base pairs)	Consistent with <i>C. albicans</i>	Consistent with <i>C. albicans</i>
Sequencing of 26S rRNA gene (~ 880 base pairs)	Consistent with <i>C. albicans</i>	Consistent with <i>C. albicans</i> ⁴
Purity (7 days)⁵		
Nutrient Broth with 0.1% Yeast Extract at 25°C	No bacterial growth	No bacterial growth
Nutrient Broth with 0.1% Yeast Extract at 37°C	No bacterial growth	No bacterial growth
Viability (post-freeze)²	Growth	Growth

¹The deposited material was inoculated into Yeast Mold (YM) broth and incubated for 3 days at 25°C and aerobic atmosphere to produce this lot.

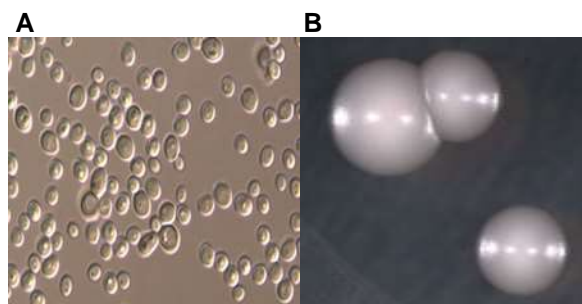
²4 days at 25°C and aerobic atmosphere on YM agar

³CHROMagar displays high sensitivity and specificity for three of the major *Candida* species (Odds, F. C., and R. Bernarts. "CHROMagar Candida, a New Differential Isolation Medium for the Presumptive Identification of Clinically Important *Candida* species." *J. Clin. Microbiol.* 32 (1994): 1923-1929. PubMed: 7989544.)

⁴Also consistent with *C. africana*

⁵Clarity of broth was determined by visual inspection.

Figure 1



Date: 24 JAN 2013

Signature: 

Title: Technical Manager, BEI Authentication or designee

ATCC[®], on behalf of BEI Resources, hereby represents and warrants that the material provided under this certificate has been subjected to the tests and procedures specified and that the results described, along with any other data provided in this certificate, are true and accurate to the best of ATCC[®]'s knowledge.

ATCC[®] is a trademark of the American Type Culture Collection.

You are authorized to use this product for research use only. It is not intended for human use.

