

**Genomic DNA from *Biomphalaria glabrata* Embryonic (Bge) Cell Line**

**Catalog No. NR-41315**

This reagent is the tangible property of the U.S. Government.

**Product Description:** Genomic DNA was extracted from *Biomphalaria glabrata* (*B. glabrata*) embryonic (Bge) cell line. The Bge cell line was derived from embryos of the snail *B. glabrata*, M-line, in 1976.

**Lot<sup>1,2</sup>: 10032012**

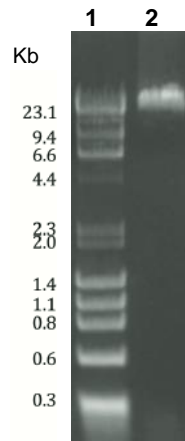
**Manufacturing Date: 24AUG2012**

TEST	SPECIFICATIONS	RESULTS
Agarose Gel Electrophoresis	High molecular weight chromosomal DNA	High molecular weight chromosomal DNA (Figure 1)
Concentration	Report results	10 µg in 100 µL per vial (0.1 µg/µL)
OD <sub>260</sub> /OD <sub>280</sub> Ratio	1.70 to 1.85	1.81

<sup>1</sup>QC testing was performed by the Biomedical Research Institute, Rockville, MD (NIH-NIAID Contract HHSN2722010000051)

<sup>2</sup>Genomic DNA was extracted as described in Knight, M., et al. "Schistosoma mansoni: Use of a Cloned Ribosomal RNA Gene Probe to Detect Restriction Fragment Length Polymorphisms in the Intermediate Host *Biomphalaria glabrata*." *Exp. Parasitol.* 73 (1991): 285-294. PubMed: 1680745.

**Figure 1: Genomic DNA Isolated from Bge Cell Line**



Lane 1: λHind III/ΦX174 digest

Lane 2: NR-41315

**Date:** 30 SEP 2013

**Signature:**

**Title:**

Technical Manager, BEI Authentication or designee

ATCC®, on behalf of BEI Resources, hereby represents and warrants that the material provided under this certificate has been subjected by the contributor to the tests and procedures specified and that the results described, along with any other data provided in this certificate, are true and accurate to the best of ATCC®'s knowledge.

ATCC® is a trademark of the American Type Culture Collection.

You are authorized to use this product for research use only. It is not intended for human use.

