

F Protein with C-Terminal Histidine Tag from Respiratory Syncytial Virus, B1, Recombinant from Baculovirus

Catalog No. NR-31097

This reagent is the tangible property of the U.S. Government.

Product Description: A recombinant form of the fusion (F) glycoprotein from respiratory syncytial virus, B1 containing an enterokinase-cleavable C-terminal histidine tag was produced by baculovirus infection of *Trichoplusia ni* insect larvae and purified by standard chromatographic methods.

Lot: 61743200

Manufacturing Date: 20SEP2013

| TEST | SPECIFICATIONS | RESULTS |
|--|---|--|
| SDS-PAGE (Coomassie Blue Densitometry) | RSV bands (F ₁ and F ₂) account for ≥ 85% of total density | RSV bands (F ₁ and F ₂) account for ≥ 85% of total density (Figure 1) |
| Concentration by Bicinchoninic Acid Protein Assay | Report results | 0.60 mg per mL |
| Final Product Quantity per vial | 0.1 mg (± 10%) per vial | 0.1 mg (± 10%) per vial |
| Western Blot Anti-RSV monoclonal antibody ¹ | Report results | Reactive with F protein (Figure 2) |
| Sandwich ELISA² | Activity observed | Activity observed (Figure 3) |
| Filtration | 0.22 µm filtered | 0.22 µm filtered |
| Bioburden | Report results | < 2 colony-forming unit per mL |
| Endotoxin Content (Limulus Amebocyte Lysate Assay) | Report results | 0.70 EU per mL |

¹Abcam ab43812

²Sandwich ELISA using mouse monoclonal antibody (Abcam ab43812) and goat anti-6-His antibody (GenWay GWB-1FEFC4)

Date: 06 NOV 2013

Signature: 

Title: Technical Manager, BEI Authentication or designee

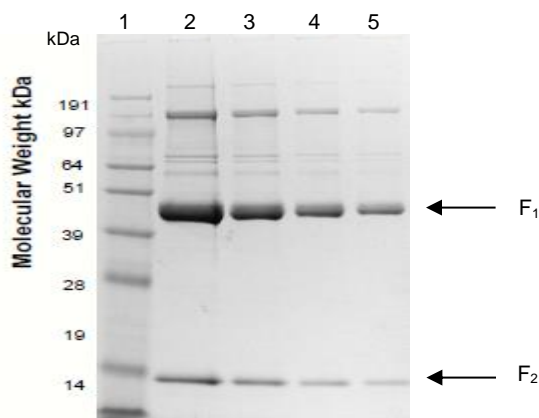
ATCC®, on behalf of BEI Resources, hereby represents and warrants that the material provided under this certificate has been subjected by the contractor to the tests and procedures specified and that the results described, along with any other data provided in this certificate, are true and accurate to the best of ATCC®'s knowledge.

ATCC® is a trademark of the American Type Culture Collection.

You are authorized to use this product for research use only. It is not intended for human use.

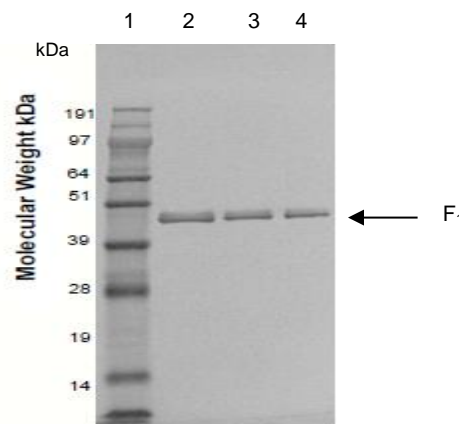


Figure 1 – SDS-PAGE



Lane 1: SeeBlue® Plus2 MW marker
(Invitrogen™ LC5925)
Lane 2: 6.0 µg NR-31097
Lane 3: 3.0 µg NR-31097
Lane 4: 1.5 µg NR-31097
Lane 5: 0.625 µg NR-31097

Figure 2 - Western Blot with Monoclonal Anti-RSV



Lane 1: SeeBlue® Plus2 MW marker
(Invitrogen™ LC5925)
Lane 2: 0.60 µg NR-31097
Lane 3: 0.30 µg NR-31097
Lane 4: 0.125 µg NR-31097

Figure 3 – Sandwich ELISA

