

***Mycobacterium tuberculosis*, Strain H37Rv, Purified Sulfolipid-1****Catalog No. NR-14845**

This reagent is the tangible property of the U.S. Government.

**Product Description:** NR-14845 is a preparation of purified sulfolipid-1 (SL-1) that was extracted from *Mycobacterium tuberculosis*, strain H37Rv cells with chloroform/methanol (2:1) and purified on a silica gel column. The loaded column was washed with chloroform and the SL-1 fraction was eluted with 5% methanol in chloroform. The SL-1 fraction was further purified on a C18 reverse phase Sep Pak filter which was washed with 60% chloroform in methanol to remove the trehalose dimycolate fraction followed by elution of the purified SL-1 with 25% chloroform in methanol.

**Lot: 61977657****Manufacturing Date: 29OCT2013**

Production and QC testing were performed by Colorado State University (CSU). The CSU documentation for lot 13.Rv.10.28.02.SLdh8 is attached.

ATCC<sup>®</sup>, on behalf of BEI Resources, hereby represents and warrants that the material provided under this certificate has been subjected by the contractor to the tests and procedures specified and that the results described, along with any other data provided in this certificate, are true and accurate to the best of ATCC<sup>®</sup>'s knowledge.

ATCC<sup>®</sup> is a trademark of the American Type Culture Collection.

You are authorized to use this product for research use only. It is not intended for human use.



## WORK SHEET FOR PURIFIED SL-I

### General Information

Lot Number: 13.Rv.10.28.02.SLdh8  
Species: *M. tuberculosis*  
Strain: H37Rv

### Purification Information

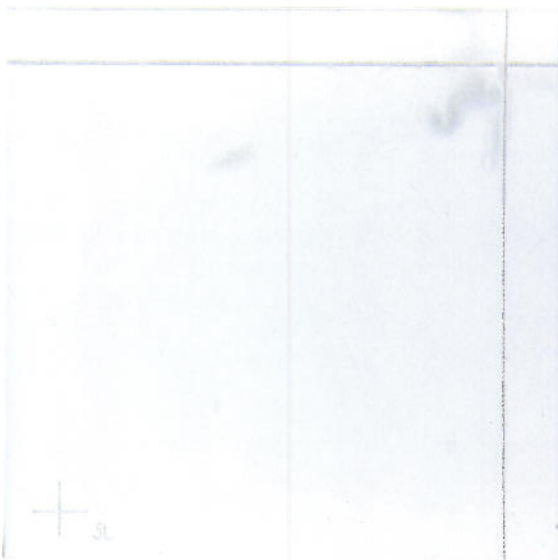
Starting material: 2:1 chloroform/methanol-extracted total lipid Aug 2013  
Lot number: Whole Cells 13.Rv.2.6.11.8.WCg  
Protocol used (SOP #'s): PP034, SP031, SP032, SP033, SP037  
Date started: 7/26/13  
Date completed: 10/29/13  
Notebook; page(s): TDM & SL Notebook 2 pp 25-50

Additional notes: Preparatory TLC plates were loaded with total lipid and developed with 100/14/0.8 chloroform/methanol/water. SL- and TDM-bearing silica was extracted with 2:1 chloroform/methanol. A final clean-up with preparatory TLC in 80/20/2 was used.

### Quality Control Information

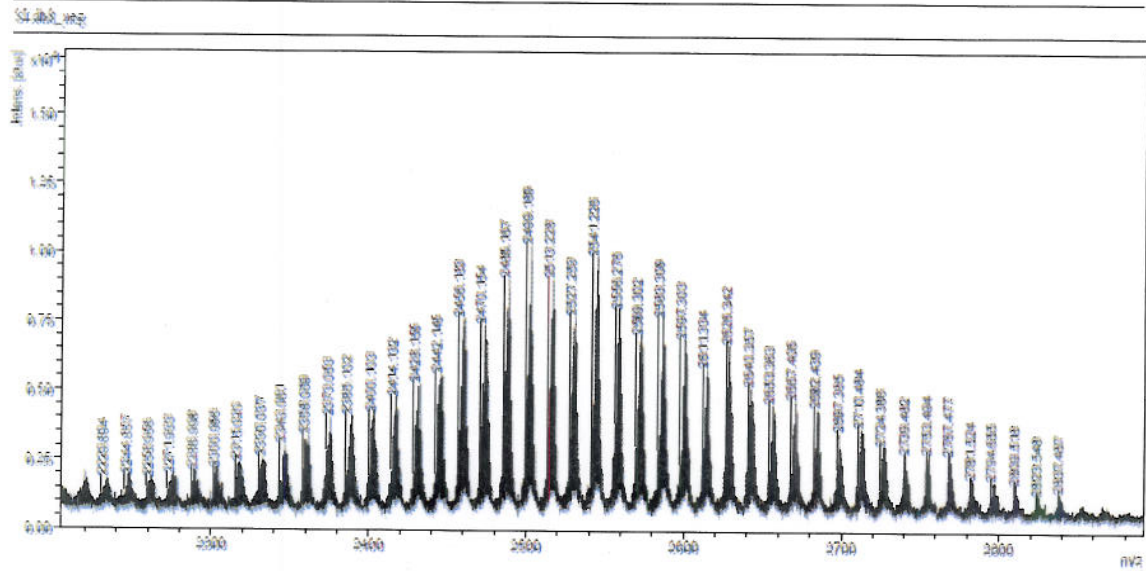
Total volume: 0.9 ml Total amount of SL-I: 2.25 mg Date dried on N<sub>2</sub> bath: 10/29/13  
Notebook and page(s): TDM & SL Notebook 2 pp 51-55 TLC date: 3/28/13 MALDI-TOF date: 10/28/13

### QC TLC



Ran 10  $\mu$ g SL. 1<sup>st</sup> dimension 100/14/0.8 CHCl<sub>3</sub>/CH<sub>3</sub>OH/H<sub>2</sub>O (left→right), 2<sup>nd</sup> dimension 80/20/2 CHCl<sub>3</sub>/CH<sub>3</sub>OH/H<sub>2</sub>O (bottom→top). Stained with CuSO<sub>4</sub>.

MALDI-TOF



Mixed 1.0  $\mu$ l sulfolipid sample at 2.0 mg/ml in 2:1  $\text{CHCl}_3/\text{CH}_3\text{OH}$  with 1.0  $\mu$ l DHAB matrix, and analyzed in negative electrospray mode without TFA.

Aliquot Information

9 x 0.25 mg = 2.25 mg

*Dan C. Assen* 10/29/13  
(Research Associate) date

*Myr. Lucas* 10-29-13  
(Laboratory Supervisor) date