

**Microbacterium sp., Oral Taxon 186, Strain F0373**

**Catalog No. HM-841**

**Product Description:** *Microbacterium* sp., Oral Taxon 186, strain F0373 is a human oral isolate from the United States.

**Lot<sup>1,2</sup>: 62072081**

**Manufacturing Date: 22NOV2013**

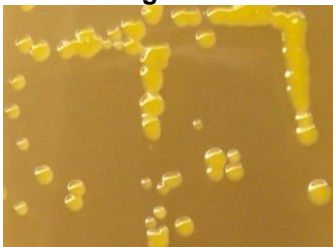
TEST	SPECIFICATIONS	RESULTS
<b>Phenotypic Analysis</b> Cellular morphology Colony morphology <sup>3</sup>  Motility (wet mount)	Gram-positive rods Report results  Report results	Gram-positive rods Circular, convex, entire, smooth, translucent and yellow (Figure 1) Non-motile
<b>Genotypic Analysis</b> Sequencing of 16S ribosomal RNA gene (~ 1420 base pairs)	≥ 99% identical to GenBank: ATCC01000006 ( <i>Microbacterium</i> sp., Oral Taxon 186, strain F0373)	≥ 99% identical to GenBank: ATCC01000006 ( <i>Microbacterium</i> sp., Oral Taxon 186, strain F0373)
<b>Viability (post-freeze)<sup>3</sup></b>	Growth	Growth

<sup>1</sup>Quality control of HMP material is only performed to demonstrate that the material distributed by BEI Resources is identical to the deposited material. It should not be considered a complete characterization of the deposited organism.

<sup>2</sup>*Microbacterium* sp., Oral Taxon 186, strain F0373 was deposited by Jacques Izard, Assistant Member of the Staff, Department of Molecular Genetics, The Forsyth Institute, Boston, Massachusetts, USA. HM-841 was produced by inoculation of the deposited material into Nutrient broth and incubated for 97 hours at 26°C in an aerobic atmosphere. Broth inoculum was added to Nutrient agar kolles which were grown 96 hours at 26°C in an aerobic atmosphere to produce this lot. Purity of this lot was assessed for 7 days under propagation conditions.

<sup>3</sup>95 hours at 26°C in an aerobic atmosphere on Nutrient agar

**Figure 1**



**Date:** 02 APR 2014

**Signature:** 

**Title:** Technical Manager, BEI Authentication or designee

ATCC®, on behalf of BEI Resources, hereby represents and warrants that the material provided under this certificate has been subjected to the tests and procedures specified and that the results described, along with any other data provided in this certificate, are true and accurate to the best of ATCC®'s knowledge.

ATCC® is a trademark of the American Type Culture Collection. You are authorized to use this product for research use only. It is not intended for human use.

