

**Genomic DNA from Castor Bean (*Ricinus communis*) Seedlings**

**Catalog No. NR-44091**

This reagent is the tangible property of the U.S. Government.

**Product Description:** Genomic DNA was extracted from a preparation of castor bean (*Ricinus communis*), cultivar Zanzibarensis, seedling leaves using the Qiagen® DNeasy® Plant Mini Kit.

**Lot<sup>1</sup>: 61992690**

**Manufacturing Date: 28AUG2013**

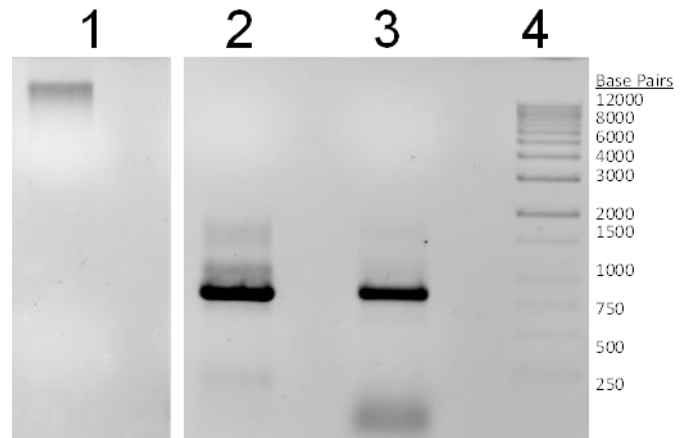
TEST	SPECIFICATIONS	RESULTS
Agarose Gel Electrophoresis	High molecular weight chromosomal DNA	High molecular weight chromosomal DNA (Figure 1)
Concentration by A <sub>260</sub> Measurement <sup>2</sup>	Report results	40 µg per mL
Amount of DNA per vial	Report results	2 µg
Functional Activity by PCR Amplification Ricin A chain Ricin B chain	Amplicon present Amplicon present	Amplicon present (Figure 1) Amplicon present (Figure 1)
OD <sub>260</sub> /OD <sub>280</sub> Ratio	1.8 to 2.0	1.9

<sup>1</sup>Castor bean seeds were obtained from D. Landreth Seed Company (Castor Bean Lot No. 46700)

<sup>2</sup>Determined prior to drying by Speed Vac using standard formula: 50 µg/mL DNA = A<sub>260</sub> of 1

**Figure 1: Agarose Gel of Genomic DNA from Castor Bean Seedling Leaves and Ricin PCR Products**

- Lane 1: Extracted genomic DNA
- Lane 2: Ricin A chain PCR amplicon
- Lane 3: Ricin B chain PCR amplicon
- Lane 4: Stratagene Kb DNA Ladder (Cat. No. 201115)



**Date:** 17 DEC 2014

**Signature:**

**Title:**

Technical Manager, BEI Authentication or designee

ATCC®, on behalf of BEI Resources, hereby represents and warrants that the material provided under this certificate has been subjected by the contractor to the tests and procedures specified and that the results described, along with any other data provided in this certificate, are true and accurate to the best of ATCC®'s knowledge.

ATCC® is a trademark of the American Type Culture Collection.

You are authorized to use this product for research use only. It is not intended for human use.

