

Polyclonal Anti-*Mycobacterium leprae* CFP-10 (antiserum, Rabbit)

Catalog No. NR-19361

This reagent is the tangible property of the U.S. Government.

Product Description: Polyclonal antiserum to CFP-10 (ML0050) of *Mycobacterium leprae* was produced in rabbits. The antiserum is reported to be active in ELISA and Western Blot assays.

Lot: 62325998

Manufacturing Date: 21APR2014

Production and QC testing were performed by Colorado State University (CSU). The CSU documentation for lot 14.Anti-MlepCFP10.3.5.rp is attached.

ATCC[®], on behalf of BEI Resources, hereby represents and warrants that the material provided under this certificate has been subjected by the contractor to the tests and procedures specified and that the results described, along with any other data provided in this certificate, are true and accurate to the best of ATCC[®]'s knowledge.

ATCC[®] is a trademark of the American Type Culture Collection.

You are authorized to use this product for research use only. It is not intended for human use.



TB Contract Antibody QC Sheet

General Information:

Product: anti-M. lep CFP10
Lot Number: 14.Anti-MlepCFP10.3.5.rp
Species: *Mycobacterium leprae*
Type: Rabbit Sera

Production Information:

Cell Line: _____ SOP#: _____ Notebook/pp: _____
Amount of CS Harvested: _____ Clarity: clear
IgG Purification: _____ SOP#: _____ Notebook/pp: _____

*Serum was concentrated approximately two-fold using 30K MWCO filter unit.

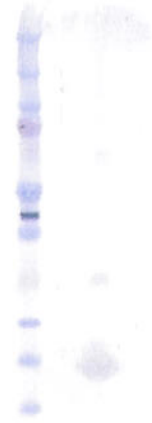
QC Information:

Filtered with 0.2 μ m PES filter
Tested Against: M. lep delipidated CFP10 SOP#: AB102
Notebook/pp: Keri Wright, Antibody Notebook #3 Y3/Y4 pAb, pgs 48-67
Titer: 1:1,000 Western blot: X ELISA: _____

Special Instructions:

QC Western blot:

1. Protein Standard
2. 5 ul M. lep CFP10



Aliquot Information: 100 x 0.25 ml, 12 x 0.25 ml

*Aliquot information reflects aliquots made at the time of QC.

Keri Wright 4/2/14
Research Associate / Date

Keri Wright 4/22/2014
Lab Supervisor / Date