

***Mycobacterium tuberculosis*, Strain H37Rv, Whole Cell Lysate**

Catalog No. NR-14822

This reagent is the tangible property of the U.S. Government.

Product Description: *Mycobacterium tuberculosis*, strain H37Rv whole cell lysate contains proteins, lipids and carbohydrates present within the bacterial cell.

Lot: 62575028

Manufacturing Date: 21APR2014

Production and QC testing were performed by Colorado State University (CSU). The CSU documentation for lot 14.Rv.2.4.22.WCL is attached.

ATCC[®], on behalf of BEI Resources, hereby represents and warrants that the material provided under this certificate has been subjected by the contractor to the tests and procedures specified and that the results described, along with any other data provided in this certificate, are true and accurate to the best of ATCC[®]'s knowledge.

ATCC[®] is a trademark of the American Type Culture Collection.
You are authorized to use this product for research use only. It is not intended for human use.



WORK SHEET FOR WHOLE CELL LYSATE

General Information

Product Lot Number: 14.Rv.2.4.22.WCL

Species: *M. tuberculosis*

Strain: H37Rv

Sonication and Fractionation Information

Starting material (lot #): 13.Rv.2.11.19.9.WCg

Cell amount (wet weight): 108.4g

SOP #: PP007.3 Notebook pages: Rachel Hazenfield Protein #2 pp. 107-108

Date of French Press Sonication: 4/10/14; Buffer used: PBS-EDTA with protease inhibitor, DNase, and RNase

Centrifugation Notes Centrifuged at 3,000 rpm for 15 minutes at 4°C

Date 10 mM ammonium bicarbonate dialysis started: 4/17/14

date completed: 4/21/14

Notebook; page(s): Rachel Hazenfield Protein #2 pg. 107

Quality Control Information

Clarity of product/suspension after dialysis: milky, off-white (normal)

BCA: 14.333µg /µl

Notebook and page(s): Rachel Hazenfield Protein #2 pg. 107

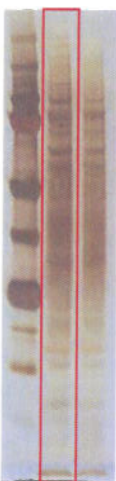
Total volume: 243.703 ml

Total amount of Protein: 3493 mg

Silver Stain Date: 4/22/14

Notebook and page(s): Rachel Hazenfield Protein #1 pg. 108

QC Gel:



Aliquot Information:

*Aliquot information reflects aliquots made at the time of QC. Bulk aliquots will be broken down as needed.

345x 10 mg; 1 x 4.3 mg

Rachel Hazenfield
(Research Associate)

4/23/14
(date)

[Signature]
(Laboratory Supervisor)

4/24/2014
(date)