

Mycobacterium tuberculosis*, Strain H37Rv, Purified Sulfolipid-1*Catalog No. NR-14845**

This reagent is the tangible property of the U.S. Government.

Product Description: NR-14845 is a preparation of purified sulfolipid-1 (SL-1) that was extracted from *Mycobacterium tuberculosis*, strain H37Rv cells with chloroform/methanol (2:1) and purified on a silica gel column. The loaded column was washed with chloroform and the SL-1 fraction was eluted with 5% methanol in chloroform. The SL-1 fraction was further purified on a C18 reverse phase Sep Pak filter which was washed with 60% chloroform in methanol to remove the trehalose dimycolate fraction followed by elution of the purified SL-1 with 25% chloroform in methanol.

Lot: 62325995**Manufacturing Date: 30APR2014**

Production and QC testing were performed by Colorado State University (CSU). The CSU documentation for lot 14.Rv.4.28.01.SLdh9 is attached.

ATCC[®], on behalf of BEI Resources, hereby represents and warrants that the material provided under this certificate has been subjected by the contractor to the tests and procedures specified and that the results described, along with any other data provided in this certificate, are true and accurate to the best of ATCC[®]'s knowledge.

ATCC[®] is a trademark of the American Type Culture Collection.

You are authorized to use this product for research use only. It is not intended for human use.



WORK SHEET FOR PURIFIED SL-I

General Information

Lot Number: 14.Rv.4.28.01.SLdh9

Species: *M. tuberculosis*

Strain: H37Rv

Purification Information

Starting material: 10:10:3 CHCl₃/CH₃OH/H₂O-extracted total lipid Dec 2013

Lot number: Whole Cells 13.Rv.2.10.22.7.WCg a,b

Protocol used (SOP #'s): PP034, SP031, SP032, SP033, SP037

Date started: 3/24/14

Date completed: 4/30/14

Notebook; page(s): TDM & SL Notebook 2 pp 59-70

Additional notes: Preparatory TLC plates were loaded with 2:1-soluble 10:10:3 total lipid and developed with 100/14/0.8 chloroform/methanol/water. SL-bearing silica was extracted with 2:1 chloroform/methanol. A final clean-up with C18 columns was employed.

Quality Control Information

Total volume: 2.5 ml Total amount of SL-I: 6.25 mg Date dried on N₂ bath: 5/2/14

Notebook and page(s): TDM & SL Notebook 2 pp 71-74 TLC date: 4/28/14 MALDI-TOF date: 4/30/14

QC TLC



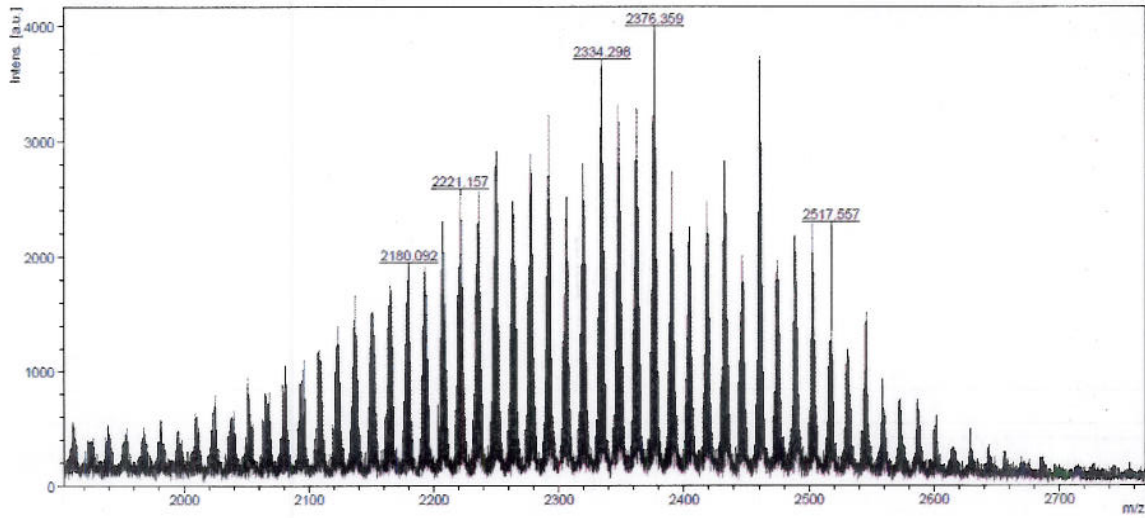
Ran 25 μ g SL. 1st dimension 100/14/0.8 CHCl₃/CH₃OH/H₂O (left→right), 2nd dimension 80/20/2 CHCl₃/CH₃OH/H₂O (bottom→top), stained with α -naphthol.

Aliquot Information

25 x 0.25 mg = 6.25 mg

MALDI-TOF

SLdb9



Mixed 1.0 μ l sulfolipid sample at 1.0 mg/ml in 2:1 $\text{CHCl}_3/\text{CH}_3\text{OH}$ with 1.0 μ l DHAB matrix, and analyzed in negative electrospray mode with TFA.

Danny C. Jensen
(Research Associate)

5/2/14
date

[Signature]
(Laboratory Supervisor)

5/2/2014
date