

Mycobacterium tuberculosis*, Strain H37Rv, Purified Trehalose Dimycolate (TDM)*Catalog No. NR-14844**

This reagent is the tangible property of the U.S. Government.

Product Description: NR-14844 is a preparation of purified trehalose dimycolate (TDM) that was extracted from the lipid fraction obtained from irradiated *Mycobacterium tuberculosis*, strain H37Rv cells. Following purification steps, the TDM was dried under nitrogen gas.

Lot: 62413953**Manufacturing Date: 02MAY2014**

Production and QC testing were performed by Colorado State University (CSU). The CSU documentation for lot 14.Rv.4.28.01.TDMdh12 is attached.

ATCC[®], on behalf of BEI Resources, hereby represents and warrants that the material provided under this certificate has been subjected by the contractor to the tests and procedures specified and that the results described, along with any other data provided in this certificate, are true and accurate to the best of ATCC[®]'s knowledge.

ATCC[®] is a trademark of the American Type Culture Collection.

You are authorized to use this product for research use only. It is not intended for human use.



WORK SHEET FOR PURIFIED TDM

General Information

Lot Number: 14.Rv.4.28.01.TDMdh12
Species: *M. tuberculosis*
Strain: H37Rv

Purification Information

Starting material: 10:10:3 CHCl₃/CH₃OH/H₂O-extracted total lipid Dec 2013
Lot number: Whole cells 13.Rv.2.10.22.7.WCg a,b
Protocol used (SOP #'s): SP031, SP032, SP033, SP037, SP046, PP029a
Date started: 3/24/14
Date completed: 5/2/14
Notebook; page(s): TDM/SL Notebook 2 pp 59-70

Additional notes: Preparatory TLC plates were loaded with 2:1-soluble 10:10:3 total lipid and developed with 100/14/0.8 chloroform/methanol/water. TDM-bearing silica was extracted with 2:1 chloroform/methanol. A final clean-up with C18 columns was employed.

Quality Control Information:

Total volume: 0.4 ml Total amount of TDM: 2.25 mg
TLC date: 4/28/14 Date dried on N₂ bath: 5/2/14
Notebook and page(s): TDM/SL Notebook 2 pp 71-74

TLC Analysis:



Loaded 25 μ g TDM and developed 1st dimension 100/14/0.8 chloroform/ methanol/ water, left to right.

2nd dimension 80/20/2 chloroform/ methanol/ water, bottom to top.

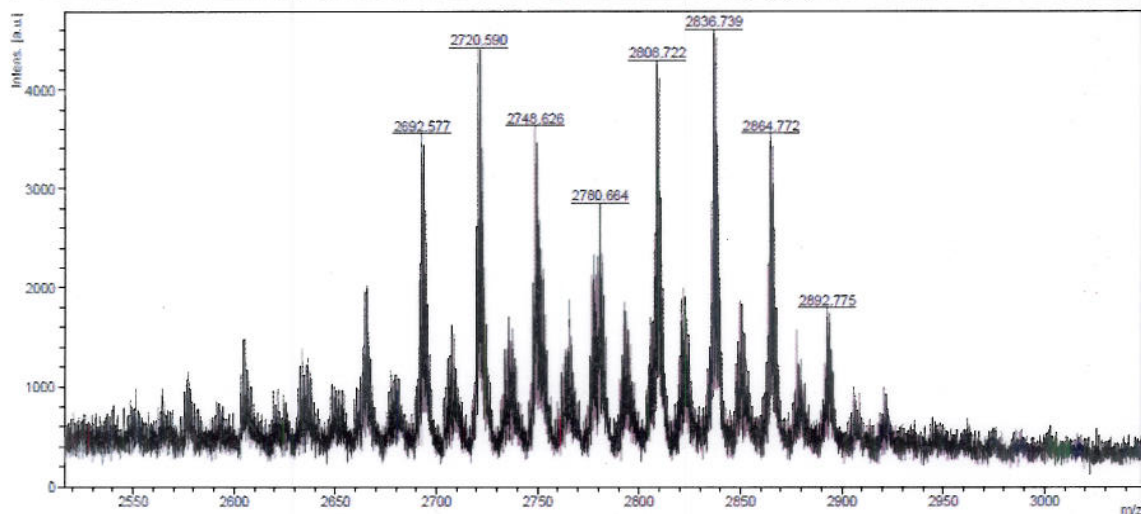
Visualized with α -naphthol.

Aliquot information

9 x 0.25 mg = 2.25 mg

MALDI Analysis

TDM4h12 02



Purified sample (1 ul at 0.25 ug/ul) was mixed 1:1 with DHB matrix and analyzed in positive electrospray mode.

Danny C. Jensen 5/2/14
(Research Associate) date

[Signature] 5/2/2014
(Laboratory Supervisor) date