

Genomic DNA from *Neisseria meningitidis*, Strain 92045

Catalog No. NR-48806

Product Description: Genomic DNA was obtained from a preparation of *Neisseria meningitidis* (*N. meningitidis*), strain 92045 which was isolated from human blood in France, 1992. *N. meningitidis*, strain 92045 was deposited as a member of serogroup 29E.

Lot¹: 62778965

Manufacturing Date: 22JUL2014

TEST	SPECIFICATIONS	RESULTS
Sequencing of 16S Ribosomal RNA Gene (~ 740 base pairs)	Consistent with <i>N. meningitidis</i>	Consistent with <i>N. meningitidis</i> ²
Agarose Gel Electrophoresis	High molecular weight chromosomal DNA	High molecular weight chromosomal DNA (Figure 1)
Concentration by PicoGreen[®] Measurement	0.7 to 1.5 µg in 25 to 100 µL per vial	1.0 µg in 31 µL per vial (31 µg/mL)
Functional Activity by PCR Amplification 16S ribosomal RNA gene	~ 1500 bp amplicon	~ 1500 bp amplicon
OD₂₆₀/OD₂₈₀ Ratio	1.7 to 2.1	1.9
Bacterial Inactivation 10% of total yield plated on Chocolate agar ^{3,4}	No viable bacteria detected	No viable bacteria detected

¹The bacterial preparation used for extraction of genomic DNA was produced by broth culture of BEI Resources NR-35038 (lot 61506864). Genomic DNA was extracted using proprietary technology.

²100% identical to *N. meningitidis*, strain 92045 (GenBank: ALXW01000006)

³7 days at 37°C in an aerobic atmosphere with 5% CO₂

⁴An extraction procedure was used that has been shown to consistently inactivate 100% of Gram-negative and Gram-positive bacteria.

Date: 08 APR 2015

Signature: 

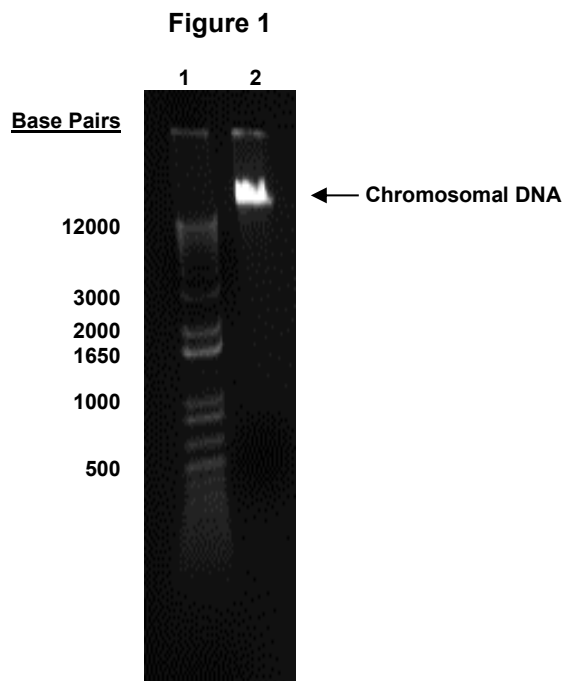
Title: Technical Manager, BEI Authentication or designee

ATCC[®], on behalf of BEI Resources, hereby represents and warrants that the material provided under this certificate has been subjected to the tests and procedures specified and that the results described, along with any other data provided in this certificate, are true and accurate to the best of ATCC[®]'s knowledge.

ATCC[®] is a trademark of the American Type Culture Collection.

You are authorized to use this product for research use only. It is not intended for human use.





Lane 1: Invitrogen™ TrackIt 1 Kb Plus DNA Ladder™
Lane 2: 200 ng of NR-48806