

**Escherichia coli, Strain 5.3176**

**Catalog No. NR-48983**

**Product Description:** *Escherichia coli* (*E. coli*), strain 5.3176 was isolated from a human subject; it has been typed as an O25:H4 strain.

**Lot<sup>1</sup>: 63083620**

**Manufacturing Date: 21NOV2014**

TEST	SPECIFICATIONS	RESULTS
<b>Phenotypic Analysis</b> Cellular morphology Colony morphology <sup>2</sup>  Motility (wet mount) VITEK <sup>®</sup> MS (MALDI-TOF)	Gram-negative rods Report results  Report results Consistent with <i>E. coli</i>	Gram-negative rods Irregular, flat, undulate, smooth and gray (Figure 1) Motile Consistent with <i>E. coli</i>
<b>Genotypic Analysis</b> Sequencing of 16S ribosomal RNA gene (~ 1410 base pairs) Riboprinter <sup>®</sup> Microbial Characterization System	Consistent with <i>E. coli</i> Consistent with <i>E. coli</i>	Consistent with <i>E. coli</i> <sup>3</sup> Consistent with <i>E. coli</i>
<b>Purity (post-freeze)<sup>4</sup></b>	Growth consistent with <i>E. coli</i>	Growth consistent with <i>E. coli</i>
<b>Viability (post-freeze)<sup>2</sup></b>	Growth	Growth

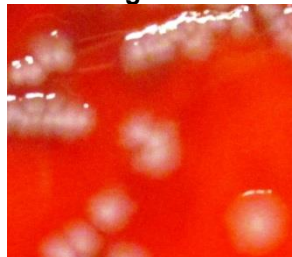
<sup>1</sup>NR-48983 was produced by inoculation of the deposited material into Tryptic Soy broth and grown 21 hours under propagation conditions. Broth inoculum was added to Tryptic Soy agar with 5% defibrinated sheep blood kolles which were grown 21 hours under propagation conditions to produce this lot.

<sup>2</sup>20 hours on Tryptic Soy agar with 5% defibrinated sheep blood under propagation conditions

<sup>3</sup>Also consistent with *Shigella* species

<sup>4</sup>Purity of this lot was assessed for 7 days on Tryptic Soy agar with 5% defibrinated sheep blood under propagation conditions.

**Figure 1**



**Date:** 26 JAN 2015

**Signature:**

**Title:** Technical Manager, BEI Authentication or designee

ATCC<sup>®</sup>, on behalf of BEI Resources, hereby represents and warrants that the material provided under this certificate has been subjected to the tests and procedures specified and that the results described, along with any other data provided in this certificate, are true and accurate to the best of ATCC<sup>®</sup>'s knowledge.

ATCC<sup>®</sup> is a trademark of the American Type Culture Collection.  
 You are authorized to use this product for research use only. It is not intended for human use.

