

**Monoclonal Anti-*Yersinia pestis* Outer Protein M (YopM), Clone CE 15-1 (produced *in vitro*)**

**Catalog No. NR-800**

**Product Description:** Antibody Class: IgG1κ, IgMκ

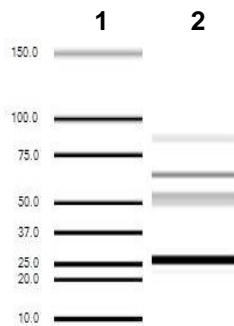
Monoclonal antibody prepared against the *Yersinia pestis* outer protein M (YopM) was purified from clone CE 15-1 hybridoma supernatant using a protein-free thiophilic adsorbent column. The antibody is reported to be specific for the leucine-rich repeat (LRR) 4 of YopM.

**Lot: 62575098**

**Manufacturing Date: 16JUL2014**

TEST	SPECIFICATIONS	RESULTS
Antibody Class	Report results	IgG1κ, IgMκ
Experion Pro260 Analysis	Correct molecular weight (MW) for heavy and light chains Report results	Correct MW for heavy and light chains (Figure 1) 83% pure
Concentration by Spectrophotometer at OD <sub>280</sub>	Report results	0.6 mg per mL
Sterility	0.22 μm filter-sterilized	0.22 μm filter-sterilized

**Figure 1**



Lane 1: MW Markers (kDa)  
Lane 2: NR-800

**Date:** 23 FEB 2015

**Signature:** *Michael R. Gynther*

**Title:** Technical Manager, BEI Authentication or designee

ATCC®, on behalf of BEI Resources, hereby represents and warrants that the material provided under this certificate has been subjected to the tests and procedures specified and that the results described, along with any other data provided in this certificate, are true and accurate to the best of ATCC®'s knowledge.

ATCC® is a trademark of the American Type Culture Collection.

You are authorized to use this product for research use only. It is not intended for human use.

