

***Pseudomonas* sp., Strain HPB0071**

Catalog No. HM-860

Product Description: *Pseudomonas* sp., strain HPB0071 was isolated from a biopsy of ileo-anal pouch mucosa of a human subject in the United States.

Lot^{1,2}: 63283081

Manufacturing Date: 11FEB2015

TEST	SPECIFICATIONS	RESULTS
Phenotypic Analysis Cellular morphology Colony morphology ³ Motility (wet mount)	Gram-negative rods Report results Report results	Gram-negative rods Circular, low convex, entire, smooth and cream (Figure 1) Motile
Genotypic Analysis Sequencing of 16S ribosomal RNA gene (~ 1480 base pairs)	≥ 99% identical to GenBank: AQFP01000012 (<i>Pseudomonas</i> sp., strain HPB0071)	≥ 99% identical to GenBank: AQFP01000012 (<i>Pseudomonas</i> sp., strain HPB0071)
Purity (post-freeze)⁴	Growth consistent with <i>Pseudomonas</i> sp.	Growth consistent with <i>Pseudomonas</i> sp.
Viability (post-freeze)³	Growth	Growth

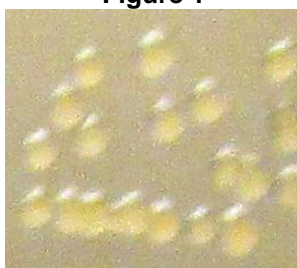
¹Quality control of HMP material is only performed to demonstrate that the material distributed by BEI Resources is identical to the deposited material. It should not be considered a complete characterization of the deposited organism.

²*Pseudomonas* sp., strain HPB0071 was deposited by Thomas M. Schmidt, Professor, Department of Microbiology and Molecular Genetics, Michigan State University, East Lansing, Michigan, USA. HM-860 was produced by inoculation of the deposited material into Nutrient broth and incubated for 23 hours at 37°C in an aerobic atmosphere. Broth inoculum was added to Nutrient agar kolles which were grown 24 hours at 37°C in an aerobic atmosphere to produce this lot.

³18 hours at 37°C in an aerobic atmosphere on Nutrient agar

⁴Purity of this lot was assessed in an aerobic atmosphere for 7 days at 37°C on Nutrient agar.

Figure 1



Date: 17 APR 2015

Signature: 
 BEI Resources Authentication

ATCC®, on behalf of BEI Resources, hereby represents and warrants that the material provided under this certificate has been subjected to the tests and procedures specified and that the results described, along with any other data provided in this certificate, are true and accurate to the best of ATCC®'s knowledge.

ATCC® is a trademark of the American Type Culture Collection. You are authorized to use this product for research use only. It is not intended for human use.

