

Escherichia coli, Strain SEQ895

Catalog No. NR-17660

Product Description: *Escherichia coli* (*E. coli*), strain SEQ895 is a human isolate obtained in the United States. Strain SEQ895 has been typed as an O17 (H antigen unknown), extraintestinal pathogenic *E. coli* (ExPEC) strain.

Lot¹: 61743358

Manufacturing Date: 15MAY2013

TEST	SPECIFICATIONS	RESULTS
Phenotypic Analysis Cellular morphology Colony morphology ² Motility (wet mount) Analytical profile index (API [®] 20 E)	Gram-negative rods Report results Report results Consistent with <i>E. coli</i>	Gram-negative rods Circular, low convex, entire, opaque, smooth and cream (Figure 1) Motile Consistent with <i>E. coli</i>
Genotypic Analysis Sequencing of 16S ribosomal RNA gene (~ 1460 base pairs) Riboprinter [®] Microbial Characterization System	Consistent with <i>E. coli</i> Consistent with <i>E. coli</i>	Consistent with <i>E. coli</i> ³ Consistent with <i>E. coli</i>
Purity (post-freeze)⁴	Growth consistent with <i>E. coli</i>	Growth consistent with <i>E. coli</i>
Viability (post-freeze)²	Growth	Growth

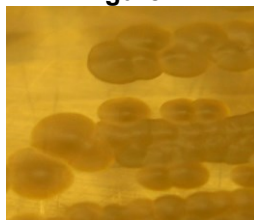
¹The deposited material was inoculated into Tryptic Soy broth and grown 24 hours at 37°C in an aerobic atmosphere, and the resulting growth was viald and frozen. NR-17660 was produced by inoculation of the frozen subculture into Tryptic Soy broth and grown 24 hours under propagation conditions. Broth inoculum was added to Tryptic Soy agar kolles which were grown 24 hours under propagation conditions to produce this lot.

²25 hours at 37°C in an aerobic atmosphere on Tryptic Soy agar

³Also consistent with *Shigella* species

⁴Purity of this lot was assessed in an aerobic atmosphere for 7 days at 37°C on Tryptic Soy agar.

Figure 1



Date: 17 APR 2015

Signature:

BEI Resources Authentication

ATCC[®], on behalf of BEI Resources, hereby represents and warrants that the material provided under this certificate has been subjected to the tests and procedures specified and that the results described, along with any other data provided in this certificate, are true and accurate to the best of ATCC[®]'s knowledge.

ATCC[®] is a trademark of the American Type Culture Collection.

You are authorized to use this product for research use only. It is not intended for human use.

