

***Mycobacterium tuberculosis*, Strain H37Rv, Purified Sulfolipid-1****Catalog No. NR-14845**

This reagent is the tangible property of the U.S. Government.

**Product Description:** NR-14845 is a preparation of purified sulfolipid-1 (SL-1) that was extracted from irradiated *Mycobacterium tuberculosis*, strain H37Rv cells with chloroform/methanol (2:1) and purified on a silica gel column. The loaded column was washed with chloroform and the SL-1 fraction was eluted with 5% methanol in chloroform. The SL-1 fraction was further purified on a C18 reverse phase Sep Pak filter which was washed with 60% chloroform in methanol to remove the trehalose dimycolate fraction followed by elution of the purified SL-1 with 25% chloroform in methanol.

**Lot: 63449520****Manufacturing Date: 11DEC2015**

Production and QC testing were performed by Colorado State University (CSU). The CSU documentation for lot 15.Rv.12.10.01.SL is attached.

ATCC<sup>®</sup>, on behalf of BEI Resources, hereby represents and warrants that the material provided under this certificate has been subjected by the contractor to the tests and procedures specified and that the results described, along with any other data provided in this certificate, are true and accurate to the best of ATCC<sup>®</sup>'s knowledge.

ATCC<sup>®</sup> is a trademark of the American Type Culture Collection.

You are authorized to use this product for research use only. It is not intended for human use.



## WORK SHEET FOR PURIFIED SULFOLIPID (SL)

### General Information

BEI Catalog Number: NR-14845  
CSU Lot Number: 15.Rv.12.10.01.SL  
Species: *M. tuberculosis*  
Strain: H37Rv

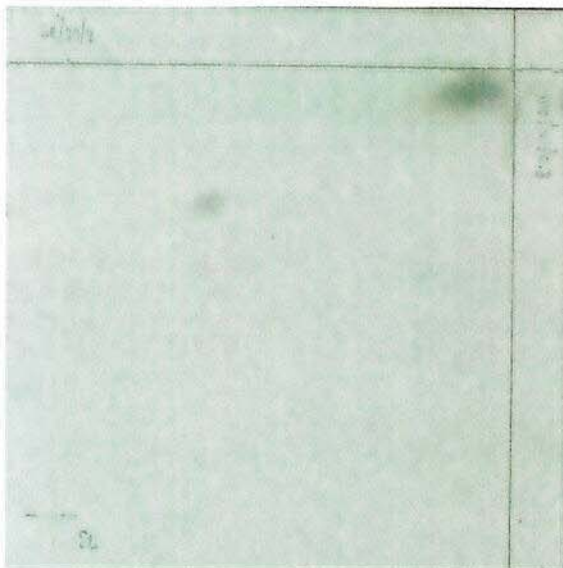
### Purification Information

Starting material: 10:10:3 total lipid  
Lot number: 13.Rv.2.9.3.9.WCg.b  
Cells Irradiated: Yes  
Viability Test Performed: No Viable Organism Detected  
Protocol used (SOP #'s): PP034, SP031, SP032, SP033, SP037  
Date started: 9/21/15  
Date completed: 12/11/15  
Notebook; page(s): TDM/Sulfolipid Notebook 2 pp 93-111  
Additional notes (if applicable): \_\_\_\_\_  
\_\_\_\_\_  
\_\_\_\_\_

### Quality Control Information:

Total volume: 3.32 ml Total amount of SL: 8.30 mg  
Date dried on N<sub>2</sub> bath: 12/11/15  
TLC date: 12/10/15 Notebook and page(s): TDM/Sulfolipid Notebook 2 pp 112-116

### QC TLC:

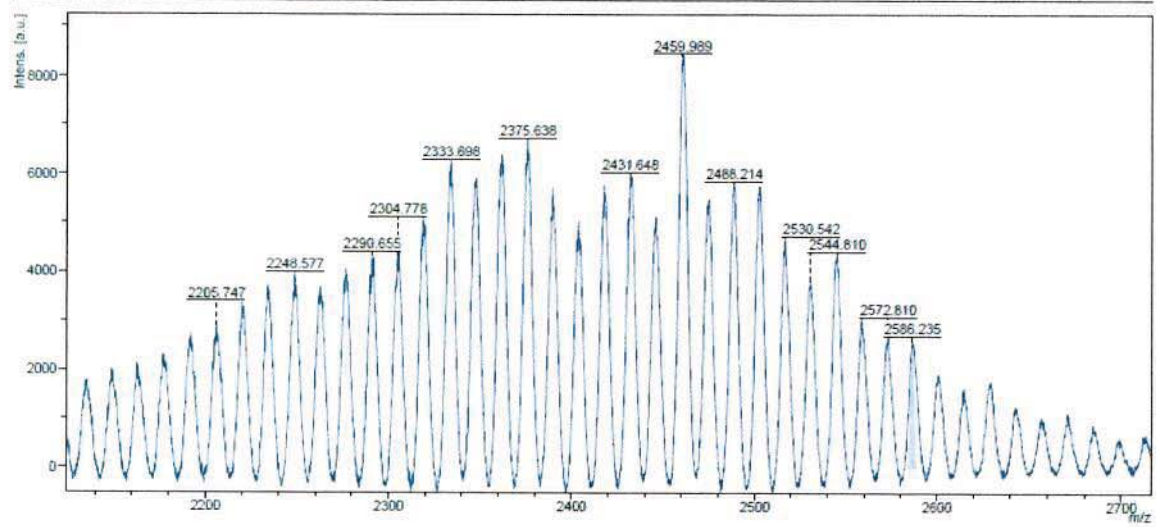
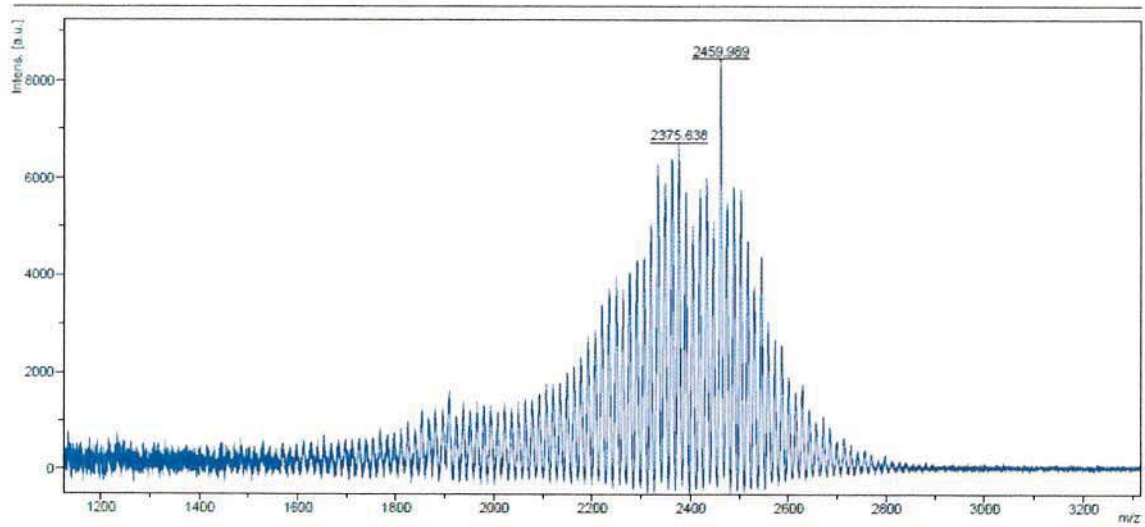


Developed 10 ug first dimension (left to right) in 100/14/0.8 chloroform/ methanol/ water; second dimension (bottom to top) in 80/20/2, same solvents.

### Aliquot Information:

25 x 0.25 mg = 6.25 mg  
1 x 2.05 mg = 2.05 mg  
**8.30 mg**

MALDI-TOF:



Loaded 1  $\mu$ l (1  $\mu$ g) SL with 1  $\mu$ l DHB matrix and analyzed in negative mode.

Danny G. Jasser 12/14/15  
(Research Associate) date

C. Pehally 12/14/15  
(Laboratory Supervisor) date