

Genomic DNA from *Yersinia pseudotuberculosis*, Strain IP2666

Catalog No. NR-4647

This reagent is the property of the U.S. Government.

Product Description: Genomic DNA was isolated from a preparation of *Yersinia pseudotuberculosis* (*Y. pseudotuberculosis*), strain IP2666. The presence of the virulence plasmid pLB1/pYV in this strain was confirmed by low Ca²⁺ response prior to deposition.

Lot¹: 57852115

Manufacturing Date: 04SEP2007

| TEST | SPECIFICATIONS | RESULTS |
|---|---|--|
| Sequencing of 16S Ribosomal RNA Gene (~ 1405 base pairs) | Consistent with <i>Y. pseudotuberculosis</i> | Consistent with <i>Y. pseudotuberculosis</i> ² |
| Agarose Gel Electrophoresis | High molecular weight chromosomal DNA | High molecular weight chromosomal DNA (Figure 1) |
| Concentration by PicoGreen[®] Measurement | 4 to 6 µg in 25 to 100 µL per vial | 5.5 µg in 33 µL per vial (169 µg/mL) |
| Functional Activity by PCR Amplification 16S ribosomal RNA gene | ~ 1500 bp amplicon | ~ 1500 bp amplicon |
| OD₂₆₀/OD₂₈₀ Ratio | 1.7 to 1.9 | 1.9 |
| Bacterial Inactivation 10% of total yield plated on Tryptic Soy Agar ^{3,4} | No viable bacteria detected | No viable bacteria detected |

¹*Y. pseudotuberculosis*, strain IP2666 was deposited by James B. Bliska, Ph.D., Associate Professor from the Department of Molecular Genetics and Microbiology, Center for Infectious Diseases, State University of New York at Stony Brook, Stony Brook, New York. The bacterial preparation used for extraction of genomic DNA was produced by culture of the deposited material onto Brain Heart Infusion Agar (BD 241830). After incubation for 24 hours at 28°C in an aerobic atmosphere, genomic DNA was extracted using proprietary technology.

²Also consistent other *Yersinia* species.

³7 days at 28°C in an aerobic atmosphere.

⁴An extraction procedure was used that has been shown to consistently inactivate 100% of Gram-negative bacteria.

Date: 28 MAR 2008

Signature: Signature on File

Title: Technical Manager, BEI Authentication or designee

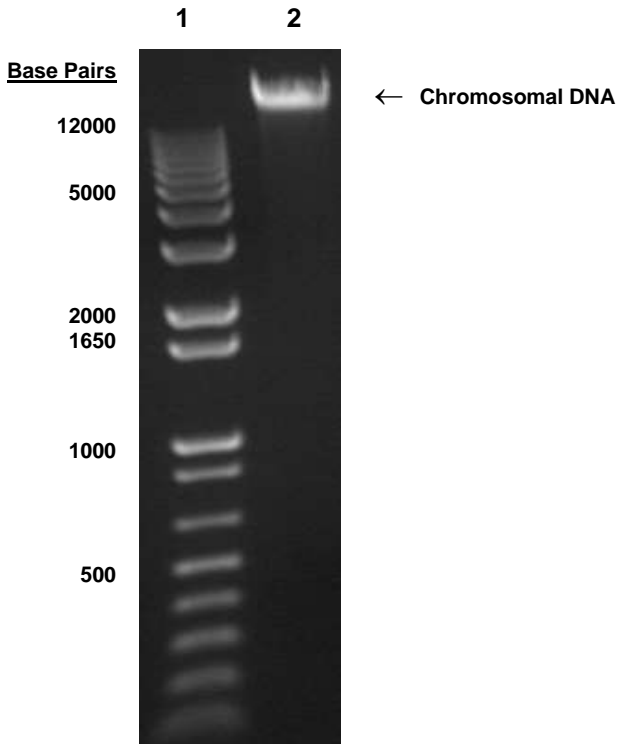
ATCC[®], on behalf of BEI Resources, hereby represents and warrants that the material provided under this certificate has been subjected to the tests and procedures specified and that the results described, along with any other data provided in this certificate, are true and accurate to the best of ATCC[®]'s knowledge.

ATCC[®] is a trademark of the American Type Culture Collection.

You are authorized to use this product for research use only. It is not intended for human use.



Figure 1



Lane 1: Invitrogen™ 1 Kb Plus DNA Ladder™
Lane 2: 200 ng of NR-4647