

Yersinia pestis* LcrV Protein, Recombinant from *Escherichia coli

Catalog No. NR-3832

This reagent is the property of the U.S. Government.

Product Description: Recombinant LcrV protein (*Y. pestis*, strain KIM5) was expressed in *Escherichia coli* BL21 cells. The N-terminal deca-histidine tagged protein was purified via nickel-NTA and gel filtration chromatography. Cleavage with Factor Xa resulted in a protein with one extra histidine at the amino acid terminus. The protein preparation was treated with Triton X-114 to reduce endotoxin contamination.

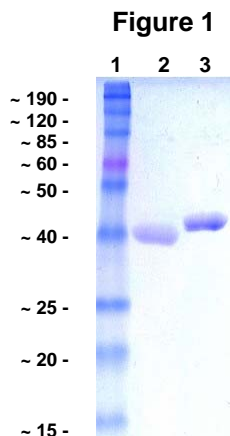
Lot¹: 57606524

Manufacturing Date: 16FEB2007

TEST	SPECIFICATIONS	RESULTS
Appearance	Clear and colorless	Clear and colorless
SDS-PAGE (Coomassie Blue densitometer scan)	Dominant band ~ 37 kDa > 95% pure	Dominant band ~ 37 kDa > 95% pure (see Figure 1)
Mass Spectrometry (MALDI)	Measured mass within 5% of expected mass based on amino acid sequence (~ 37395 daltons)	Measured mass within 0.2% of expected mass based on amino acid sequence (37453 daltons)
Concentration (Bicinchoninic Acid Protein Assay, BSA standard)	Report results	1 mg/mL
Endotoxin Content ²	Report results	2.4 EU/mL

¹NR-3832 was extracted from a preparation of *E. coli* BL21 cells and purified by nickel affinity and gel filtration chromatography. The N-terminal histidine tag was removed from the protein by digestion with Factor Xa (Novagen Catalog No. 69037-3).

²QCL-1000® Chromogenic LAL Endpoint Assay (Cambrex Catalog No. 50-647U).



SDS-PAGE gel of LcrV purified recombinant protein

Lane 1: BenchMark™ Pre-Stained Protein Ladder (Invitrogen Catalog No. 10748-010; ! 10 to ~ 190 kDa)

Lane 2: NR-3832

Lane 3: NR-3832 prior to Factor Xa treatment

Date: 07 AUG 2007

Signature: Signature on File

Title: Technical Manager, BEI Authentication or designee

ATCC®, on behalf of BEI Resources, hereby represents and warrants that the material provided under this certificate has been subjected by the contributor to the tests and procedures specified and that the results described, along with any other data provided in this certificate, are true and accurate to the best of ATCC®'s knowledge.

ATCC® is a trademark of the American Type Culture Collection.

You are authorized to use this product for research use only. It is not intended for human use.

Biodefense and Emerging Infections Research Resources Repository

P.O. Box 4137

Manassas, VA 20108-4137 USA

www.beiresources.org

800-359-7370

Fax: 703-365-2898

E-mail: contact@beiresources.org