

***Bifidobacterium adolescentis*, Strain L2-32**

**Catalog No. HM-633**

**Product Description:** *Bifidobacterium adolescentis* (*B. adolescentis*), strain L2-32 was obtained in 1996 from the fecal sample of a healthy two-year-old infant in Aberdeen, Scotland, United Kingdom.

**Lot<sup>1,2</sup>: 0002013**

**Manufacturing Date: 29SEP2016**

TEST	SPECIFICATIONS	RESULTS
<b>Phenotypic Analysis</b> Cellular morphology Colony morphology <sup>3</sup>  Motility (wet mount)	Gram-positive rods Report results  Report results	Gram-positive rods Circular, low convex, entire, smooth and gray (Figure 1) Non-motile
<b>Genotypic Analysis</b> Sequencing of 16S ribosomal RNA gene (~ 720 base pairs)	≥ 99% identical to <i>B. adolescentis</i> , strain L2-32 (GenBank: AAXD02000018)	≥ 99% identical to <i>B. adolescentis</i> , strain L2-32 (GenBank: AAXD02000018)
<b>Purity (post-freeze)</b> Anaerobic growth <sup>4</sup>  Aerobic growth <sup>5</sup>	Consistent with expected colony morphology No growth	Consistent with expected colony morphology No growth
<b>Viability (post-freeze)<sup>3</sup></b>	Growth	Growth

<sup>1</sup>Quality control of HMP material is only performed to demonstrate that the material distributed by BEI Resources is identical to the deposited material. It should not be considered a complete characterization of the deposited organism.

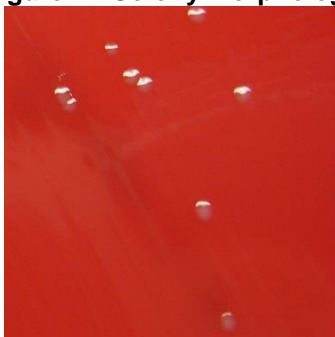
<sup>2</sup>*B. adolescentis*, strain L2-32 was deposited by Harry J. Flint and Sylvia H. Duncan, Department of Gut Health, Rowett Institute of Nutrition and Health, University of Aberdeen, Bucksburn, Aberdeen, Scotland, UK. The deposited material was inoculated into Modified Reinforced Clostridial broth and grown for 2 days at 37°C in an anaerobic atmosphere (90% N<sub>2</sub>:5% CO<sub>2</sub>:5% H<sub>2</sub>). Broth inoculum was added to Tryptic Soy agar with 5% defibrinated sheep blood kolles, which were grown for 2 days at 37°C in an anaerobic atmosphere and preserved in 10% glycerol. HM-633 was produced by inoculation of the preserved material into Modified Reinforced Clostridial broth and grown for 2 days at 37°C in an anaerobic atmosphere (< 0.5% O<sub>2</sub>; Remel™ Anaero Pack-Anaero™). The growth material was passaged once in Modified Reinforced Clostridial broth for 1 day at 37°C in an anaerobic atmosphere to produce this lot.

<sup>3</sup>2 days at 37°C in an anaerobic atmosphere on Tryptic Soy agar with 5% defibrinated sheep blood

<sup>4</sup>Purity of this lot was assessed for 7 days at 37°C in an anaerobic atmosphere on Tryptic Soy agar with 5% defibrinated sheep blood.

<sup>5</sup>Purity of this lot was assessed for 7 days at 37°C in an aerobic atmosphere with 5% CO<sub>2</sub> on Tryptic Soy agar with 5% defibrinated sheep blood.

**Figure 1: Colony Morphology**



**Date:** 01 NOV 2016

**Signature:** 

BEI Resources Authentication

ATCC®, on behalf of BEI Resources, hereby represents and warrants that the material provided under this certificate has been subjected to the tests and procedures specified and that the results described, along with any other data provided in this certificate, are true and accurate to the best of ATCC®'s knowledge.

ATCC® is a trademark of the American Type Culture Collection.

You are authorized to use this product for research use only. It is not intended for human use.

