

***Acinetobacter baumannii*, Strain WC-487**

Catalog No. NR-19299

Product Description: *Acinetobacter baumannii* (*A. baumannii*), strain WC-487 was isolated in March 2008 from an intact human skin surface at Camp Delta in Iraq.

Lot¹: 64498990

Manufacturing Date: 31AUG2016

TEST	SPECIFICATIONS	RESULTS
Phenotypic Analysis Cellular morphology Colony morphology ² Motility (wet mount) Growth at 44°C ± 2°C ^{3,4} Biochemical characterization: Catalase Oxidase VITEK [®] MS (MALDI-TOF)	Report results Report results Report results Growth Positive Negative <i>A. baumannii</i>	Gram-negative rods Circular, convex, entire, smooth and cream (Figure 1) Motile Growth Positive Negative <i>A. baumannii</i> complex (99.9%) ⁵
Genotypic Analysis Sequencing of 16S ribosomal RNA gene (~ 1480 base pairs)	≥ 99% identical to GenBank: AMZR01000012.1 (<i>A. baumannii</i> , strain WC-487)	99.8% identical to GenBank: AMZR01000012.1 (<i>A. baumannii</i> , strain WC-487)
Purity (post-freeze)⁶	Growth consistent with expected colony morphology	Growth consistent with expected colony morphology
Viability (post-freeze)²	Growth	Growth

¹NR-19299 was produced by inoculation of NRS-19299 lot 61589067 into Brain Heart Infusion broth and incubated for 1 day at 37°C in an aerobic atmosphere. Broth inoculum was added to Brain Heart Infusion agar kolles, which were grown for 1 day at 37°C in an aerobic atmosphere to produce this lot.

²1 day on Brain Heart Infusion agar at 37°C in an aerobic atmosphere

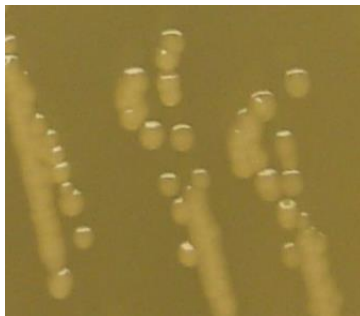
³1 day on Brain Heart Infusion agar at 44°C ± 2°C in an aerobic atmosphere

⁴Growth at 44°C ± 2°C differentiates *A. baumannii* from *A. calcoaceticus*, which does not grow at 44°C ± 2°C.

⁵*A. baumannii* complex species include *A. baumannii*, *A. calcoaceticus*, *A. pittii* and *A. nosocomialis*.

⁶Purity of this lot was assessed for 7 days on Tryptic Soy agar with 5% defibrinated sheep blood at 37°C in an aerobic atmosphere.

Figure 1: Colony Morphology



Date: 18 NOV 2016

Signature:



BEI Resources Authentication

ATCC®, on behalf of BEI Resources, hereby represents and warrants that the material provided under this certificate has been subjected to the tests and procedures specified and that the results described, along with any other data provided in this certificate, are true and accurate to the best of ATCC®'s knowledge.

ATCC® is a trademark of the American Type Culture Collection.

You are authorized to use this product for research use only. It is not intended for human use.

